

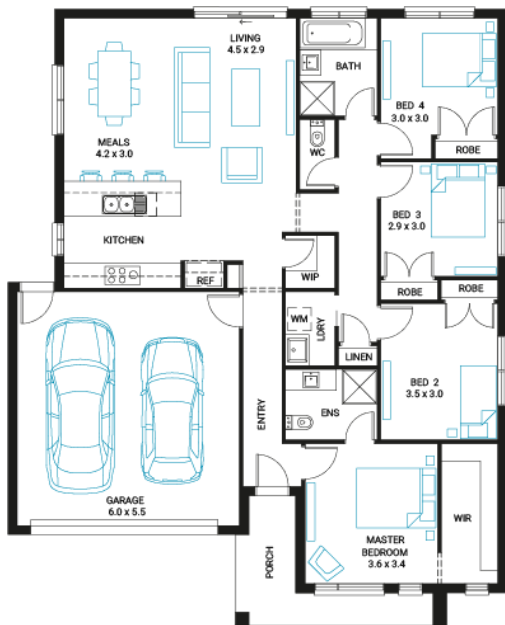


Murray 19

4 2 2

Address
Lot 4637, Meridian, Clyde North, 3978

Facade Mode **Lot Width** 14 **Lot size** 371 m² **House size** 179 m²



Available Structural Options

U Shape Kitchen, L Shape Kitchen, Outdoor Living, Theatre,

Your Inclusions

- 'H' class waffle concrete slab
- Double glazing throughout
- Insect Screens with fibreglass mesh throughout
- Dimmable LED downlights to main Living areas
- Flooring throughout (tiles and carpet)
- 'Quantum Quartz' engineered stone benchtops with 20mm edge profile, to Kitchen
- 900mm Kitchen Appliances
- Laminate overhead cupboards with concealed rangehood to Kitchen
- Tiled shower bases to Bathroom and Ensuite
- Gas ducted heating
- 'Colorbond' sectional overhead door with automated lifter and remote controls
- Solar PV system
- 25-year structural guarantee
- 12-month maintenance period
- 7-Star energy rating compliance
- Trusted New Home Builder in Melbourne, Victoria for over 25 years

Package Enquiries
Abbey Cole - 0448 421 941,
abbey@beachwood-homes.com.au

MERIDIAN
LIVING