

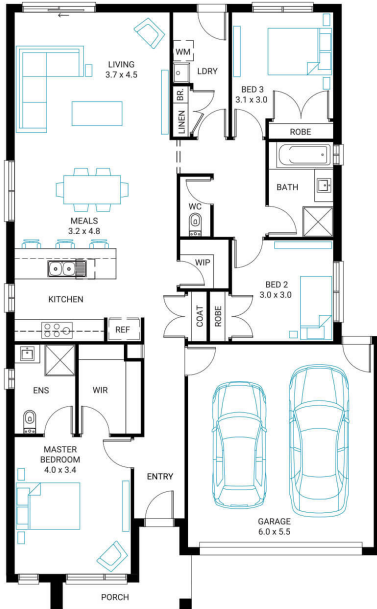


## Wave 19

3 2 2

**Address**  
Lot 1204, Smiths Park, Clyde North, 3978

<b>Facade Mode</b> MK1	<b>Lot Width</b> 15.3	<b>Lot size</b> 400 m <sup>2</sup>	<b>House size</b> 177 m <sup>2</sup>
---------------------------	--------------------------	---------------------------------------	---



### Available Structural Options

Rear Flip, Fourth Bedroom, Fourth Bedroom & Outdoor Living, Deluxe Ensuite, Powder Room, U Shape Kitchen,

### Your Inclusions

- 'H' class waffle concrete slab
- Double glazing throughout
- Insect Screens with fibreglass mesh throughout
- Dimmable LED downlights to main Living areas
- Flooring throughout (tiles and carpet)
- 'Quantum Quartz' engineered stone benchtops with 20mm edge profile, to Kitchen
- 900mm Kitchen Appliances
- Laminate overhead cupboards with concealed rangehood to Kitchen
- Tiled shower bases to Bathroom and Ensuite
- Gas ducted heating
- 'Colorbond' sectional overhead door with automated lifter and remote controls
- Solar PV system
- 25-year structural guarantee
- 12-month maintenance period
- 7-Star energy rating compliance
- Trusted New Home Builder in Melbourne, Victoria for over 25 years

Package Enquiries  
Abbey Cole - 0448 421 941,  
abbey@beachwood-homes.com.au

