

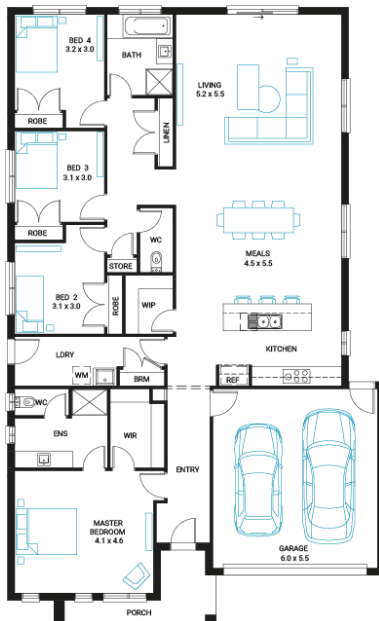


Murray 25

4 2 2

Address
Lot 343, Verve, Clyde North, 3978

Facade Pacific
Lot Width 14
Lot size 392 m²
House size 235 m²



Available Structural Options

Outdoor Living, U Shape Kitchen, Butlers Pantry, Fifth Bedroom, Theatre Room, Study, Rear Flip, Deluxe Kitchen, Walk In Linen, Powder Room,

Your Inclusions

- 'H' class waffle concrete slab
- Double glazing throughout
- Insect Screens with fibreglass mesh throughout
- Dimmable LED downlights to main Living areas
- Flooring throughout (tiles and carpet)
- 'Quantum Quartz' engineered stone benchtops with 20mm edge profile, to Kitchen
- 900mm Kitchen Appliances
- Laminate overhead cupboards with concealed rangehood to Kitchen
- Tiled shower bases to Bathroom and Ensuite
- Gas ducted heating
- 'Colorbond' sectional overhead door with automated lifter and remote controls
- Solar PV system
- 25-year structural guarantee
- 12-month maintenance period
- 7-Star energy rating compliance
- Trusted New Home Builder in Melbourne, Victoria for over 25 years

Package Enquiries
Gemma Rosbiffi - 0409 801 884 ,
gemma@beachwood-homes.com.au

