



Beachwood
HOMES



Meridian Estate
Display Center

On Display

Lorne 40 with Cape Facade
Wave 22 with Pinnacle Facade



The Wave 22

🛏️ 4 🍷 2 🚗 2



Embrace contemporary family living.

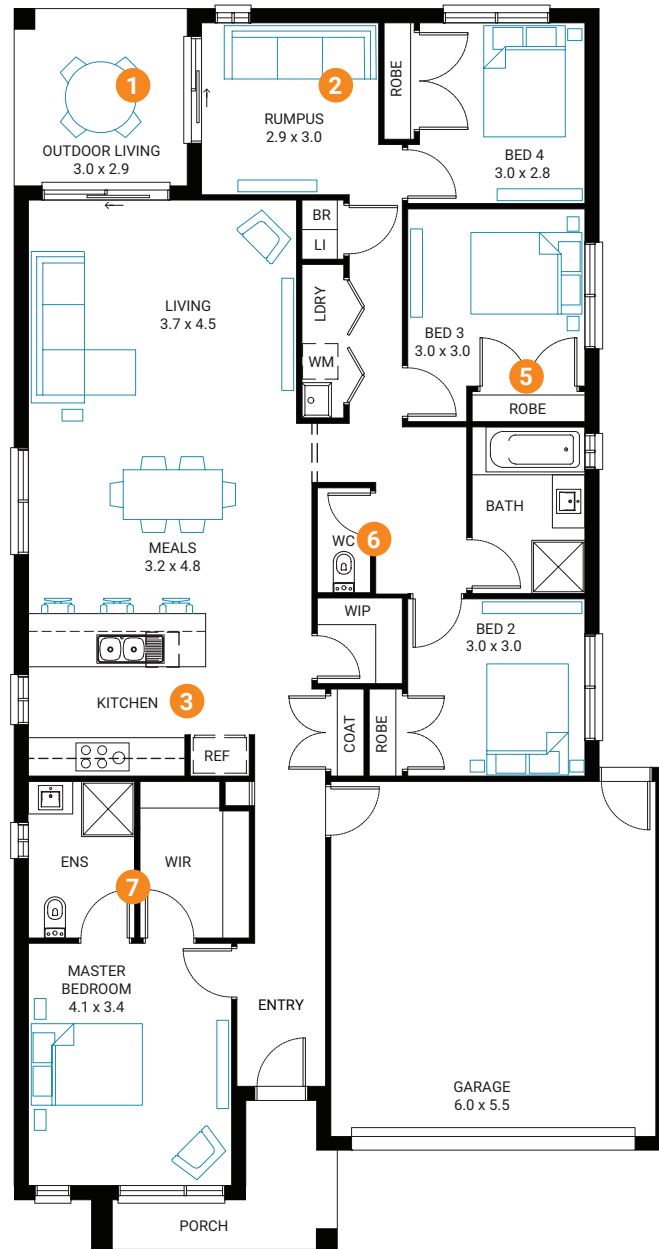
Indulge in luxurious family living with the Wave's abundance of features.

Boasting a secluded master suite at the front, the Wave 22 presents a multitude of entertainment choices at the rear with a rumpus room and generously sized open plan living area.

Additionally, the Wave offers four ample bedrooms and several adaptable floorplan options to cater to diverse lifestyles.

Evolve
COLLECTION 





Standard Floorplan

HOUSE SIZE

House Area	204.2 (m ²)
House Area	21.98 (sqs)
Exterior Length	20.7 (m)
Exterior Width	11.1 (m)

OTHER SIZES AVAILABLE

19 sqs - Suits 12.5m x 28m block[†]

FLOORPLAN OPTIONS*

- 1 Grand Outdoor Living
- 2 5th Bedroom
- 3 U-Shape Kitchen
- 4 Rear Flip
- 5 Conventional Laundry
- 6 Powder Room
- 7 Deluxe Ensuite

DESIGNED TO SUIT

12.5m x 28m[†] Block Size



MORE
INFORMATION



The Lorne 40

4 2 2



Experience luxurious living.

If you have a large family, the Lorne design is an excellent choice. It boasts an imaginative design that can accommodate up to five bedrooms and three substantial living spaces, providing plenty of room for everyone to spread out comfortably.

In addition, it features a separate study for those who need to work from home and a walk-in pantry that provides ample storage space for your household needs. With all the space you could ask for, the Lorne design is an excellent option for families who require a lot of room.

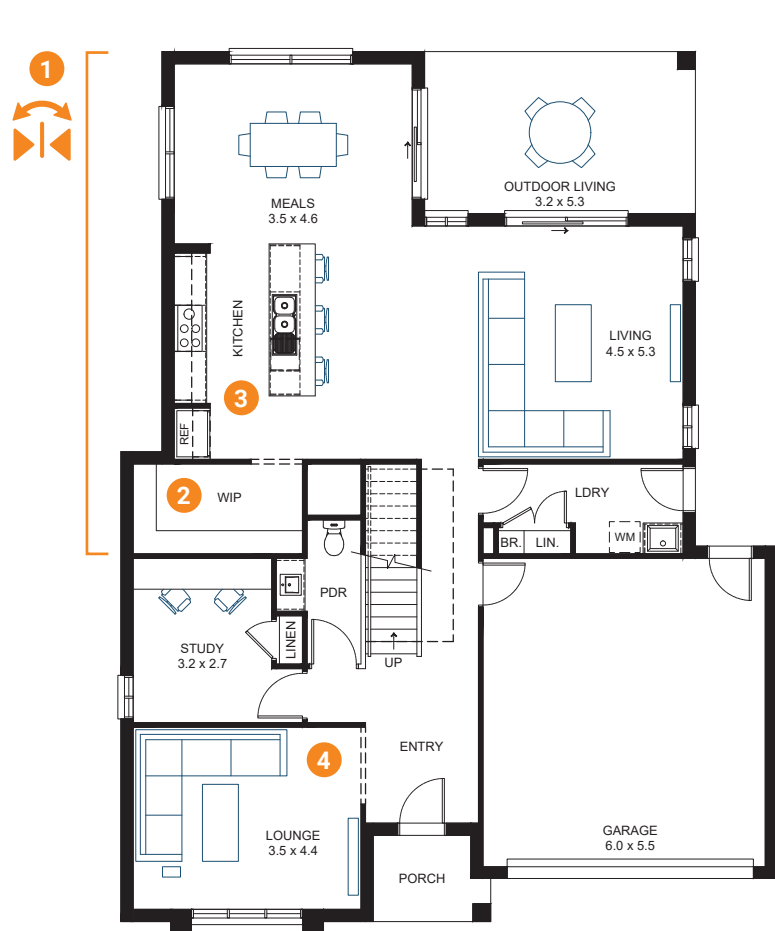
Ascend
COLLECTION



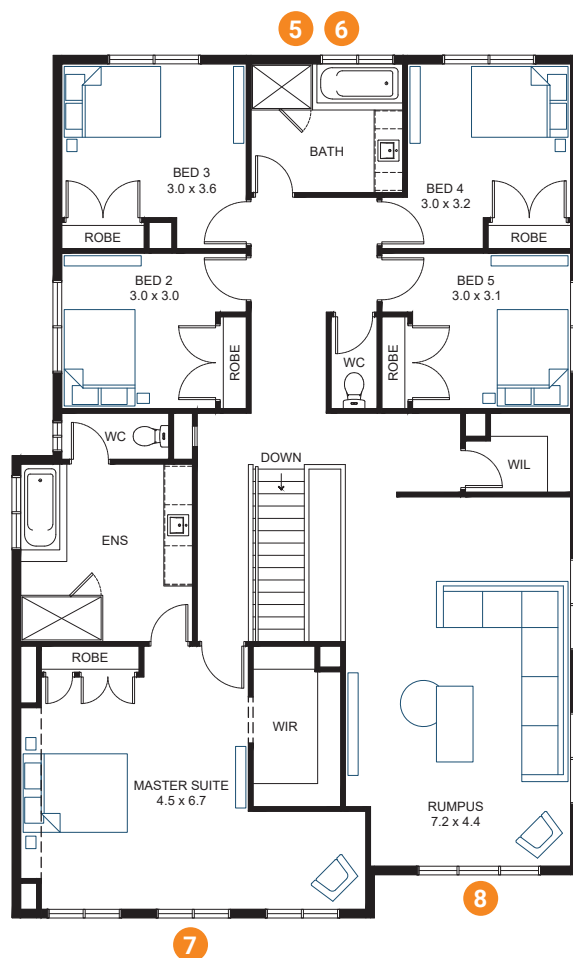


Layout not quite right?

Speak to us about customisable floorplans



Standard Floorplan - Ground Floor



Standard Floorplan - First Floor

HOUSE SIZE

House Area	367.1 (m ²)
House Area	39.51 (sqm)
Exterior Length	17.2 (m)
Exterior Width	12.8 (m)

OTHER SIZES AVAILABLE

- 28 sqm - Suits 14m x 25m block[†]
- 31 sqm - Suits 14m x 25m block[†]
- 34 sqm - Suits 14m x 25m block[†]
- 38 sqm - Suits 14m x 25m block[†]

FLOORPLAN OPTIONS*

- 1 Ground Floor Rear Flip
- 2 Butler's Pantry
- 3 Deluxe Kitchen
- 4 Ground Floor Master Suite
- 5 Ensuite to all Bedrooms
- 6 Walk-In Robes to all Bedrooms
- 7 Balcony 1 option
- 8 Balcony 2 option

DESIGNED TO SUIT

16m x 25m[†] Block Size



MORE
INFORMATION



The Lorne 40

Facade Options



Style your home your way with multiple facade options to choose from.

Whether you prefer your home dressed in Modern lines or Country style is more your taste, the choice is yours when you build with Beachwood Homes. **Browse the home designs on our website for even more options.**





The Wave 22

Facade Options



COVE



CHALET MK2
As displayed at Kaduna Park Estate



PINNACLE
As displayed at Meridian Estate



PACIFIC
As displayed at Minta Estate



SANDY
As displayed at Orana Estate



MODE
As displayed at Waterford Rise Estate

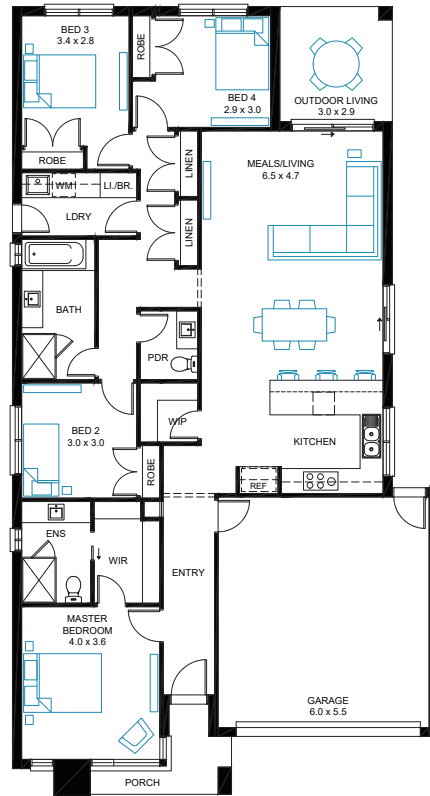


CENTRAL

The Wave 22

The displayed Wave 22 floorplan utilises its various flexible design options to incorporate a traditional laundry instead of the base European laundry. Additionally, it boasts a U-shaped kitchen, powder room, and deluxe ensuite, all contributing to its overall appeal.

A bedroom interior featuring a dark wood nightstand with a large vase of flowers and a tall candle. A bed with a dark headboard and white bedding is visible, along with a striped wall and a window with sheer curtains.



As Displayed Floorplans

Our friendly New Home Consultants are experts at providing advice and guidance on all Beachwood home designs. They will discuss what you're looking for in your new home, showing full appreciation for your budget parameters. Whichever design you have in mind, your consultant will be able to explore all possibilities with you, considering all inclusions, facades, alternative floor plans and upgrades.

The Lorne 40

The showcased Lorne 40 floorplan capitalises on its capacity to include an ensuite and WIR to all bedrooms, transforming it into an ideal multi-generational home. The displayed floorplan also features a large outdoor living space and a butler's pantry, perfect for entertaining.

A modern living room interior. The wall is covered in large, light-colored rectangular tiles. A large, round mirror is mounted on the wall, reflecting a window with a brick wall outside. Below the mirror is a dark, rectangular fireplace. To the right of the fireplace is a white console table with drawers. On the console table is a decorative white object that looks like a heart-shaped mirror or a piece of art. In the foreground, there is a round, light-colored coffee table with a metal frame. On the coffee table is a wicker basket containing a potted plant, some decorative stones, and a small white object. The floor is covered with a blue and white patterned rug.

