



Beachwood
HOMES

Home Design
Collection

EDITION 5





THE "CAPE" FACADE - ON DISPLAY AT MERIDIAN ESTATE, CLYDE NORTH

Your new home build is in safe hands.

25
YEARS+



If you're in search of a builder that values trust, experience, and quality above all else, then look no further than Beachwood Homes.

As a family owned and operated business, we take pride in our commitment to providing exceptional homes that meet the needs of our clients. Our focus is on delivering innovative and value-for-money homes, built to consistently high standards, with a dedication to exemplary customer service.

With over 25 years of experience as Melbourne's trusted home builder, you can trust our experienced team to guide you through your new home journey from start to finish. Our long-standing reputation for excellence in the industry is a testament to our dedication to treating every home we build as if it were our own.





How to use our Home Collection Book.

Home Designs

The Beachwood Homes Design Collection Book features our stunning display homes and home designs in their most popular sizes. Where there are more size options available, these will be indicated in the details and floorplans are available to view on our website.

QR Codes

Throughout this guide we have included "QR Codes" for easy navigation to our website for further information. Use your camera or a QR Code App on your smart phone or device to scan.



OPEN CAMERA
AND HOVER OVER
CODE

Ascend
COLLECTION



Double
Storey
Luxury

PAGE
5

Evolve
COLLECTION



Single
Storey
Living

PAGE
29

Rise
COLLECTION



Small
Lot
Homes

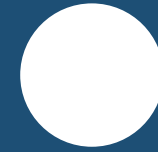
PAGE
67





Ascend

COLLECTION



If upgrading your lifestyle to one of luxury is your priority, explore our Ascend range.

Our flagship range of two-storey homes is sophisticated, practical yet stylish and incredibly spacious, with an extensive array of luxury inclusions and exceptional finishes to cater to your needs and your unique style.

Scan to view our full collection of Ascend designs online.



ON DISPLAY

Meridian Estate
Clyde North



The Lorne

The Lorne
40

5
2.5
2



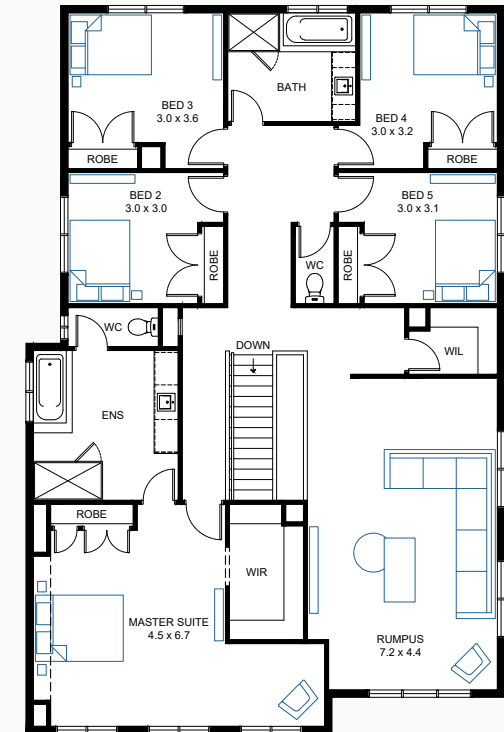
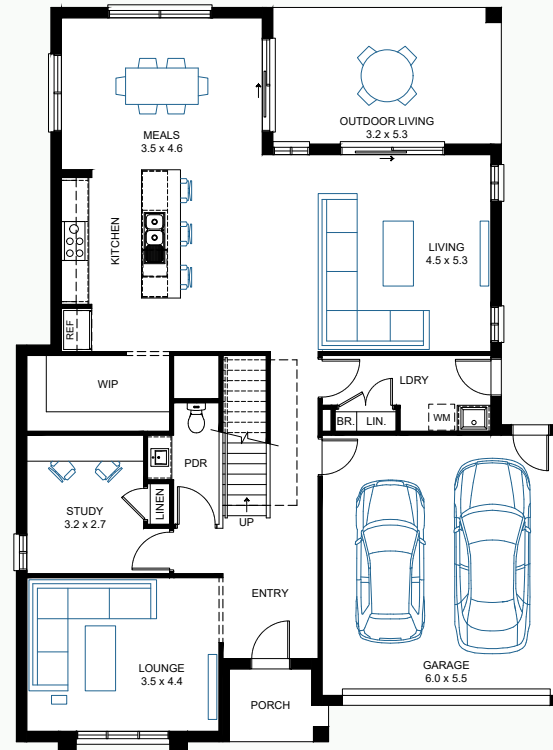
Block Size: 16m x 25m*

House Area (m²) 367.1
House Area (sqsq) 39.51
Exterior Length (m) 17.2
Exterior Width (m) 12.8

Floorplan Options: Ground Floor Rear Flip, Butler's Pantry, Deluxe Kitchen, Ground Floor Master Suite, Ensuite to all Bedrooms, Walk-In Robe to all Bedrooms, Balcony Option 1, Balcony Option 2

Other Sizes Available:

38 **34** **31** **28**



Experience family living at its finest with the Lorne. With up to 6 bedrooms, 3 living spaces, and versatile floorplan options, it's the perfect home for multi-generational families.



SCAN FOR OPTIONS & FLOORPLANS

Discover the Lorne where space & style unite to create a home you'll never want to leave.



THE "CAPE" FACADE
Available on the Ascend Collection



ON DISPLAY

Meridian Estate
Clyde North



ON DISPLAY

Kaduna Park Estate
Officer South



The Elwood

The Elwood

33

5
2
2



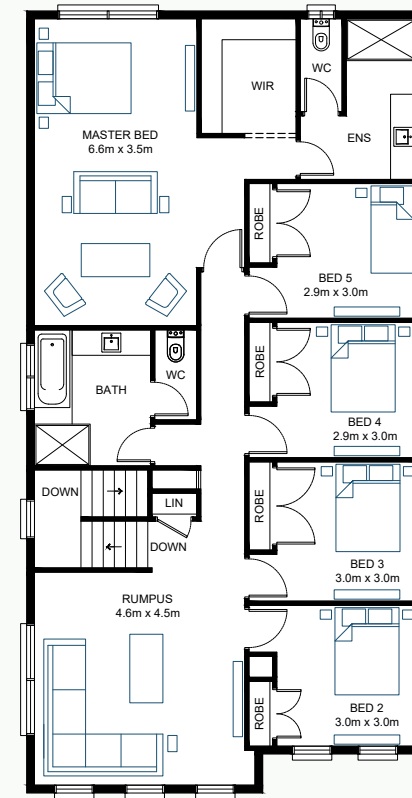
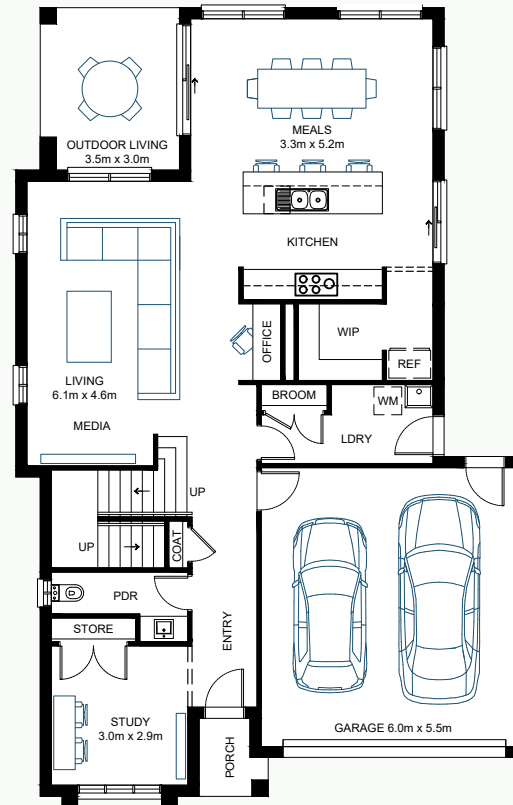
Block Size: 12.5m x 25m*

House Area (m²) 302.4
House Area (sqsq) 32.39
Exterior Length (m) 17.23
Exterior Width (m) 11.1

Floorplan Options: Laundry Chute, Rear Flip, Sixth Bedroom, Shower to Powder Room, Additional Master Suite, Butler's Pantry, Balcony Option 1, Balcony Option 2, Alternative Kitchen

Other Sizes Available:

30 **28**



Masterfully designed with indoor and outdoor living in mind. The Elwood makes a statement, offering you spacious entertainment options on each level, with up to five generously sized bedrooms to retreat to at the end of the day.



SCAN FOR OPTIONS & FLOORPLANS

Experience luxury
living at its finest
in The Elwood.



THE "BAY" FACADE
Available on the Ascend Collection



ON DISPLAY

Kaduna Park Estate
Officer South



ON DISPLAY

Orana Estate
Clyde North



The Jarrah

The Jarrah
35

4
2
2



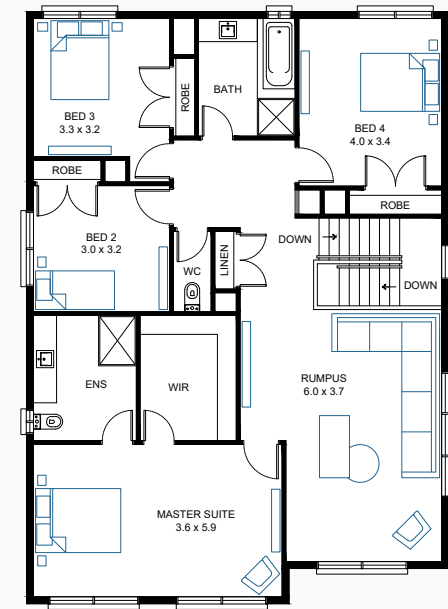
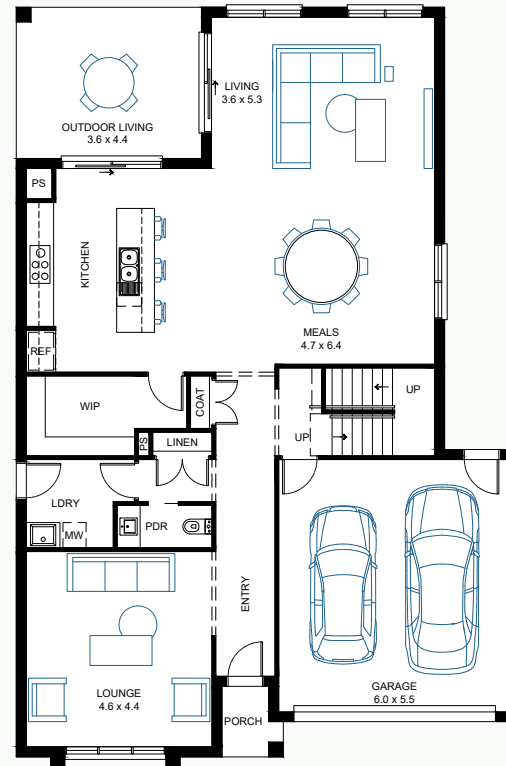
Block Size: 14m x 28m*

House Area (m²) 329.2
House Area (sqm) 35.43
Exterior Length (m) 18.1
Exterior Width (m) 12

Floorplan Options: Grand Ensuite, Deluxe Kitchen, Powder Room, Extended Laundry & Walk-In Pantry, Butler's Pantry, Deluxe Bathroom, Additional Walk-In Robe, Rear Flip, Balcony Option 1, Balcony Option 2, Stair Bench

Other Sizes Available:

39 **31** **29**



The Jarrah comes loaded with features and multiple living spaces. Kick back in the large private front lounge room downstairs, and relax in the palatial master bedroom upstairs, with an impressive Ensuite and Walk-In Robe to match.



SCAN FOR OPTIONS & FLOORPLANS



HIA Awards Winner

Winner: 2022 HIA Victoria Housing Awards

'Kitchen in a Display Home up to \$500K' awarded to the Jarrah 35 Display Home.

Finalist: 2022 HIA Victoria Housing Awards

'Display Home \$450-\$500K' awarded to the Jarrah 35 Display Home.

THE "BAY (MK3)" FACADE
Available on the Ascend Collection



ON DISPLAY

Orana Estate
Clyde North



Take a
Virtual Tour



The Spinifex

The Spinifex

38

4
2
2



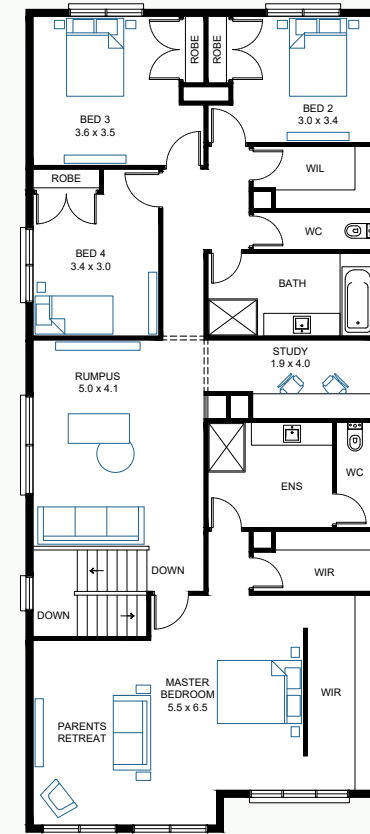
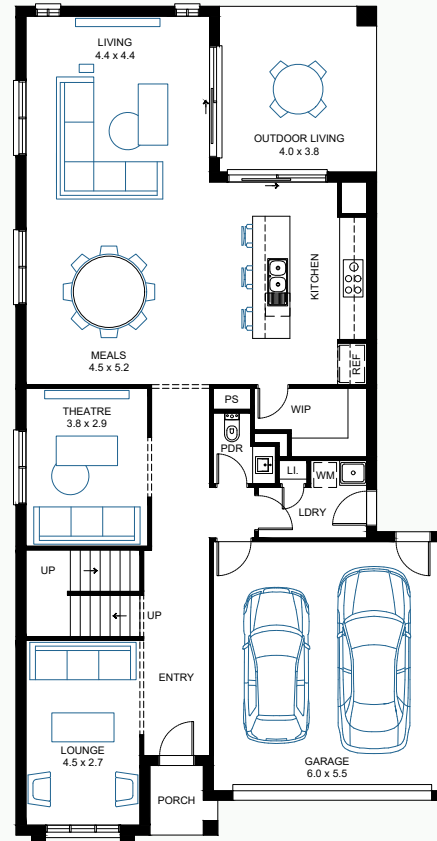
Block Size: 12.5m x 28m*

House Area (m²) 349.1
House Area (sqg) 37.58
Exterior Length (m) 20.24
Exterior Width (m) 10.5

Floorplan Options: First Floor Ensuite, Deluxe Kitchen, Ground Floor Master Bedroom Option 1, Ground Floor Master Bedroom Option 2, Shower to Powder Room, Fifth Bedroom, Balcony Option 1, Balcony Option 2, Butler's Pantry, Fireplace, Additional First Floor Master Bedroom, Grand Ensuite, Rear Flip, Lounge Void, Extended Laundry & Pantry, Extended Lounge, Extended Theatre, Walk-In Robe to Bedrooms 2 & 3, First Floor Powder Room, Extended Walk-In Robe

Other Sizes Available:

45 **34** **31** **28**



Innovative two-storey living at its finest. Designed with families in mind with a substantial leisure space & superb open plan living areas. Comprising of three private living spaces, there is plenty of room in the Spinifex for friends & family to relax & be entertained in your beautiful home.



SCAN FOR OPTIONS & FLOORPLANS



HIA Awards Finalist

2020 HIA Victoria Housing Awards

'Display Home \$400k - \$500k' awarded to the Spinifex 38 Display Home.

THE "CHICAGO" FACADE
Available on the Ascend Collection





Take a
Virtual Tour



Take a
Virtual Tour



The Lorne

The Lorne 34

4
2
2



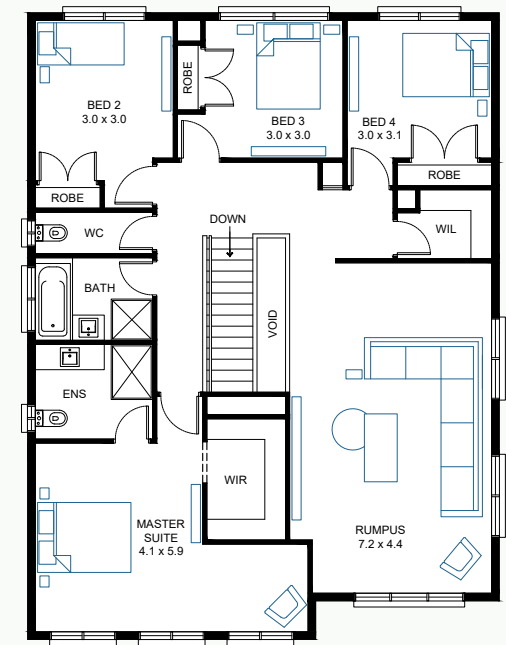
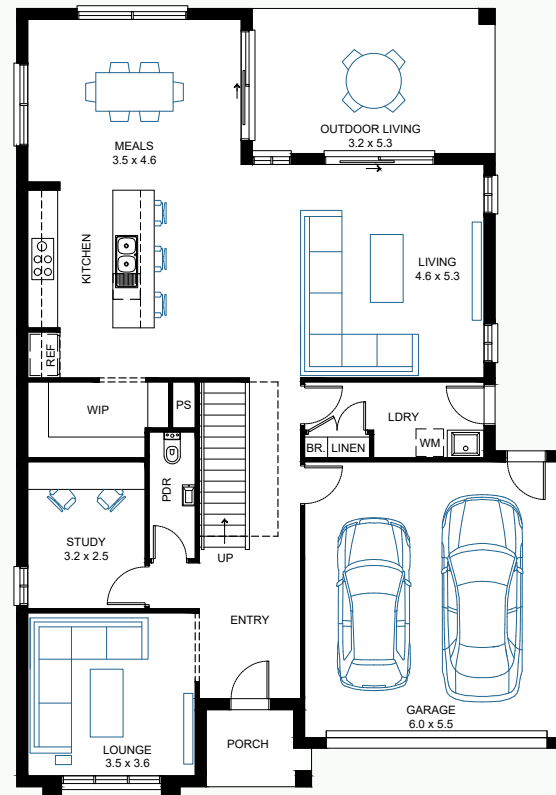
Block Size: 14m x 25m*

House Area (m²) 320.1
House Area (sqgs) 34.67
Exterior Length (m) 17.2
Exterior Width (m) 12

Floorplan Options: Ground Floor additional Master Suite, First Floor Grand Ensuite, Deluxe Kitchen, Butler's Pantry, Walk-In Robe to Bedrooms 2 & 3, Ground Floor Rear Flip, Balcony Option 1, Balcony Option 2

Other Sizes Available:

40 **38** **31** **28**



The Lorne is an ideal choice for families looking for ample space. Its innovative design features up to five bedrooms and three spacious living areas, providing plenty of room for everyone to relax and unwind. In addition to a separate Study, the Lorne boasts a large Walk-In Pantry, offering all the storage space you could possibly need.



SCAN FOR OPTIONS & FLOORPLANS



HIA Awards Finalist

2021 HIA Victoria Housing Awards

'Kitchen in a Display Home under \$500k' awarded to the Lorne 34 Display Home.

THE "CAPE" FACADE
Available on the Ascend Collection





Take a
Virtual Tour





THE "LORNE 40" - ON DISPLAY AT MERIDIAN ESTATE, CLYDE NORTH

The Gunnamatta

The Gunnamatta

32



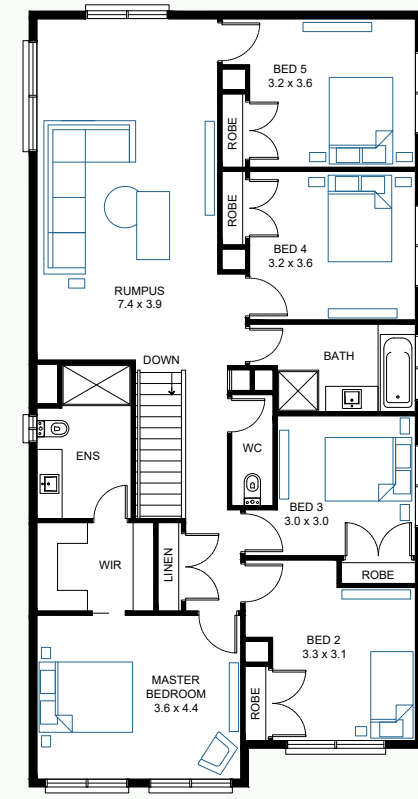
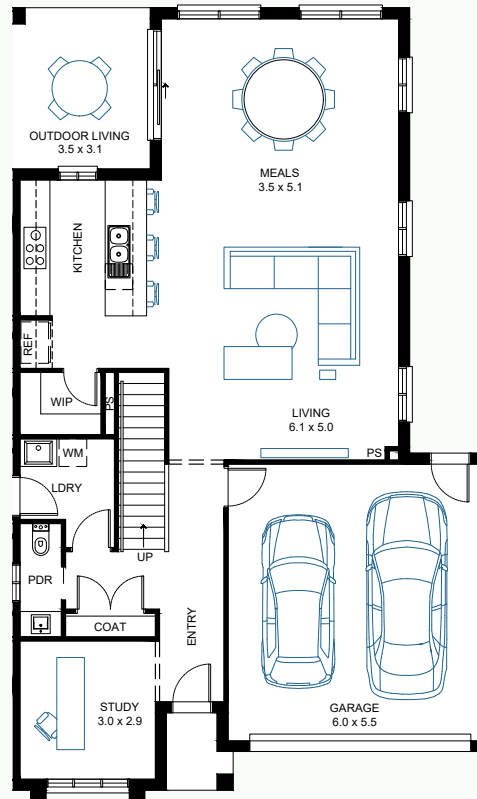
Block Size: 12.5m x 25m*

House Area (m²) 297.2
House Area (sqm) 31.99
Exterior Length (m) 17.23
Exterior Width (m) 10.5

Floorplan Options: Deluxe Kitchen, Extended Laundry & Kitchen, Sixth Bedroom, Shower to Powder Room, Balcony Option 1, Balcony Option 2, Rear Flip, Grand Outdoor Living

Other Sizes Available:

29 26 23



Make the most of your lot size with the masterfully designed double-storey Gunnamatta. With spacious living and working downstairs and a comfortable relaxation zone upstairs, the Gunnamatta caters to all of your family's entertainment and living needs.



SCAN FOR OPTIONS & FLOORPLANS



THE "NORFOLK 28" - ON DISPLAY AT KADUNA PARK ESTATE, OFFICER SOUTH



Evolve

COLLECTION



Homes in our Evolve range lift the bar in contemporary design, offering more design flexibility, more space, more luxury and more convenience for those who need it.

By far, our largest and most popular range of designs, these single-storey, low-maintenance, spacious homes have everything you need and extra inclusions you've always wanted.

Scan to view our
full collection of
Evolve designs
online.

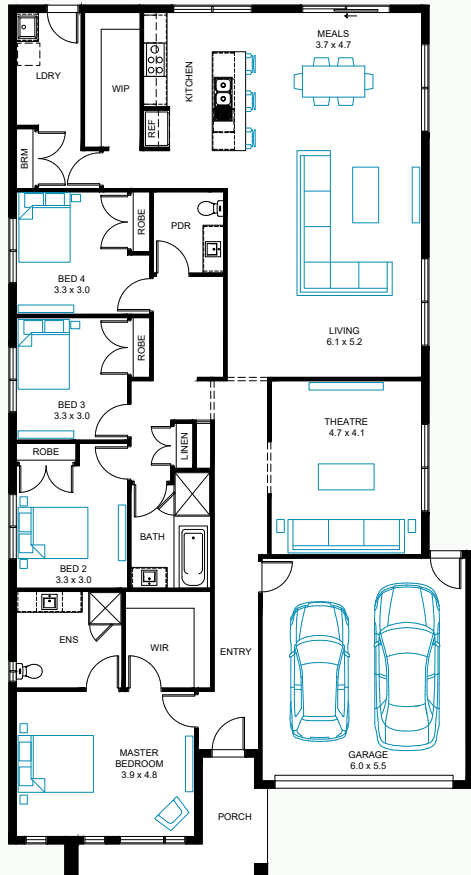


ON DISPLAY

Kaduna Estate
Officer South



The Norfolk



The Norfolk

28 4
2
2

 **Block Size:** 14m x 32m*

House Area (m²) 261.8
House Area (sqg) 28.18
Exterior Length (m) 23.5
Exterior Width (m) 12.5

Floorplan Options: Outdoor Living (side), Grand Outdoor Living, Rear Flip, Deluxe Ensuite, Butler's Pantry, Deluxe, L-Shape & U-Shape Kitchen, Study

Other Sizes Available:

27 **25** **22**



Indulge in the perfect blend of style and space with the Norfolk 28. This magnificent home boasts a luxurious Master Suite and Home Theater at the front, three privately sectioned bedrooms to the side, and an expansive L-shaped Living space with a zoned Kitchen, Laundry, and Walk-In Pantry at the rear, making it the ultimate setting for effortless living and entertainment.



SCAN FOR OPTIONS & FLOORPLANS

Luxury and
spaciousness
meet in the
Norfolk 28.



THE "CHALET" FACADE
Available on the Evolve Collection





ON DISPLAY

Kaduna Estate
Officer South

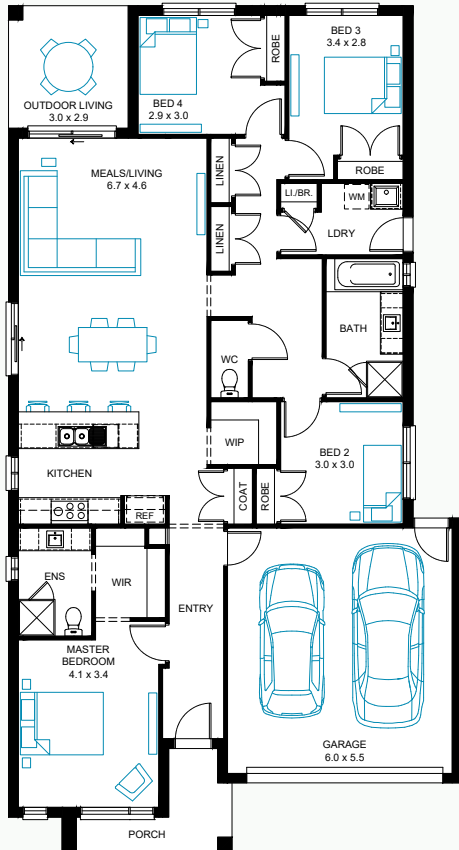


ON DISPLAY

Meridian Estate
Clyde North



The Wave



The Wave

22

4
2
2



Block Size: 12.5m x 28m*

House Area (m²) 204.2

House Area (sqm) 21.98

Exterior Length (m) 20.7

Exterior Width (m) 11.1

Floorplan Options: Fifth Bedroom, Rear Flip, Conventional Laundry, Powder Room, Deluxe Ensuite, Grand Outdoor Living, U-Shape Kitchen

Other Sizes Available:

19



With no shortage of features, the Wave truly offers luxurious family living. Showcasing a private Master Suite at the front of the home while the rear of the home is dedicated to spacious open plan living for everyone to enjoy.



SCAN FOR OPTIONS & FLOORPLANS

Experience
the ultimate
family living
in the Wave 22.



THE "PINNACLE" FACADE
Available on the Evolve Collection



ON DISPLAY

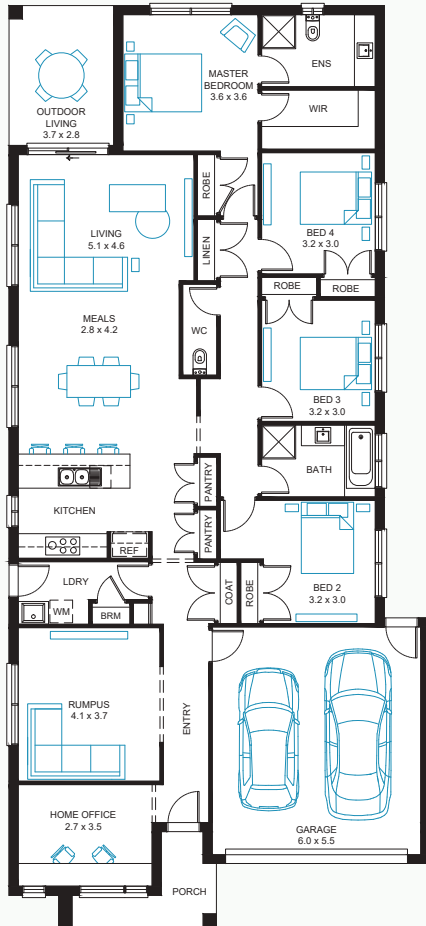
Meridian Estate
Clyde North



Take a
Virtual Tour



The Malibu



The Malibu

26

4
2
2



Block Size: 12.5m x 32m*

House Area (m²) 239.8

House Area (sqgs) 25.81

Exterior Length (m) 24.31

Exterior Width (m) 11.1

Floorplan Options: Rear Flip, Fifth Bedroom, Deluxe Ensuite, Powder Room, U-Shape Kitchen, L-Shape Kitchen

Other Sizes Available:

24



The Malibu cleverly caters to all your family's living, working and relaxation needs. The front office provides a peaceful and private space to work from home, while the rumpus room is perfect for enjoying a movie. Other features include an open plan Kitchen overlooking the spacious living & meals area, as well as a private Master Suite at the rear.



SCAN FOR OPTIONS & FLOORPLANS



HIA Awards Winner

Winner: 2022 HIA Victoria Housing Awards

'Bathroom in a Display Home up to \$500K'.

Winner: 2022 HIA Victoria Housing Awards

'Laundry in a Display Home'

Finalist: 2022 HIA Victoria Housing Awards

'Kitchen in a Display Home up to \$500K'.

Finalist: 2022 HIA Victoria Housing Awards

'Display Home \$450-\$500K'.

THE "CHALET" FACADE
Available on the Evolve Collection



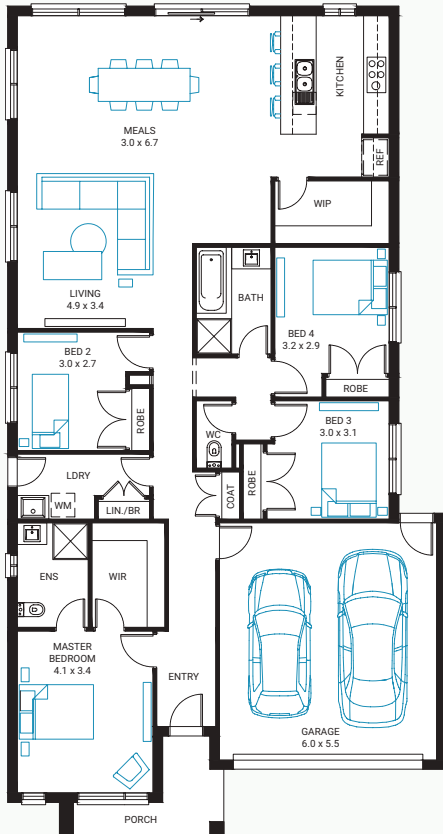
Take a
Virtual Tour



Take a
Virtual Tour



The New Haven



The New Haven

22 4
2
2

 **Block Size:** 12.5m x 28m*

House Area (m²) 207.1
House Area (sqg) 22.30
Exterior Length (m) 21
Exterior Width (m) 11.1

Floorplan Options: Deluxe Ensuite, Grand Ensuite, Outdoor Living Option 1, Outdoor Living Option 2, Outdoor Living Option 3, Butler's Pantry, U-Shape Kitchen, Powder Room, Theatre Room, Study, Rear Flip



A clever home full of features usually found in much larger homes, including a luxurious Master Suite equipped with an Ensuite and Walk-In Robe, built in Robes to the other bedrooms, a Walk-In Pantry and a double garage. With its impressive array of features and flexible design, the New Haven is the perfect choice for those seeking a comfortable and functional home.



SCAN FOR OPTIONS &
FLOORPLANS



HIA Awards Finalist

2021 HIA Victoria Housing Awards

'Kitchen in a Display Home up to \$500k' awarded to the New Haven 22 Display Home.

THE "CENTRAL" FACADE
Available on the Evolve Collection



Take a
Virtual Tour

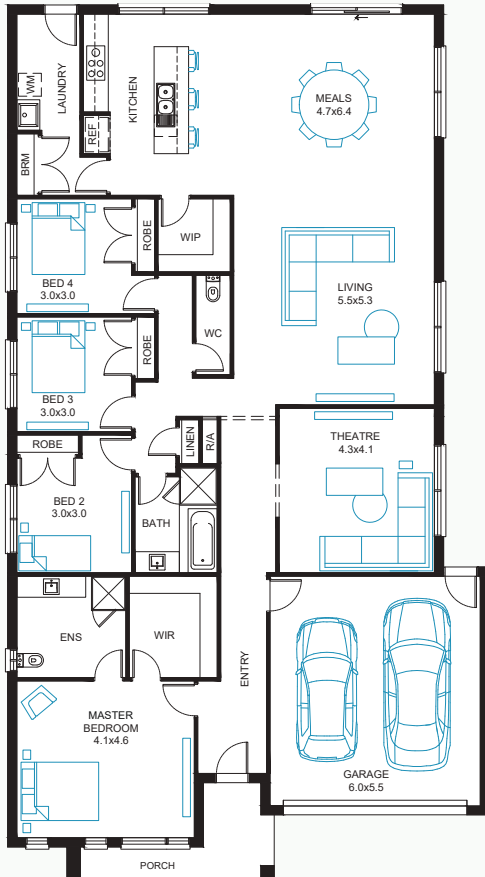




ON DISPLAY

Minta Estate
Berwick

The Norfolk



The Norfolk

27 4
2
2

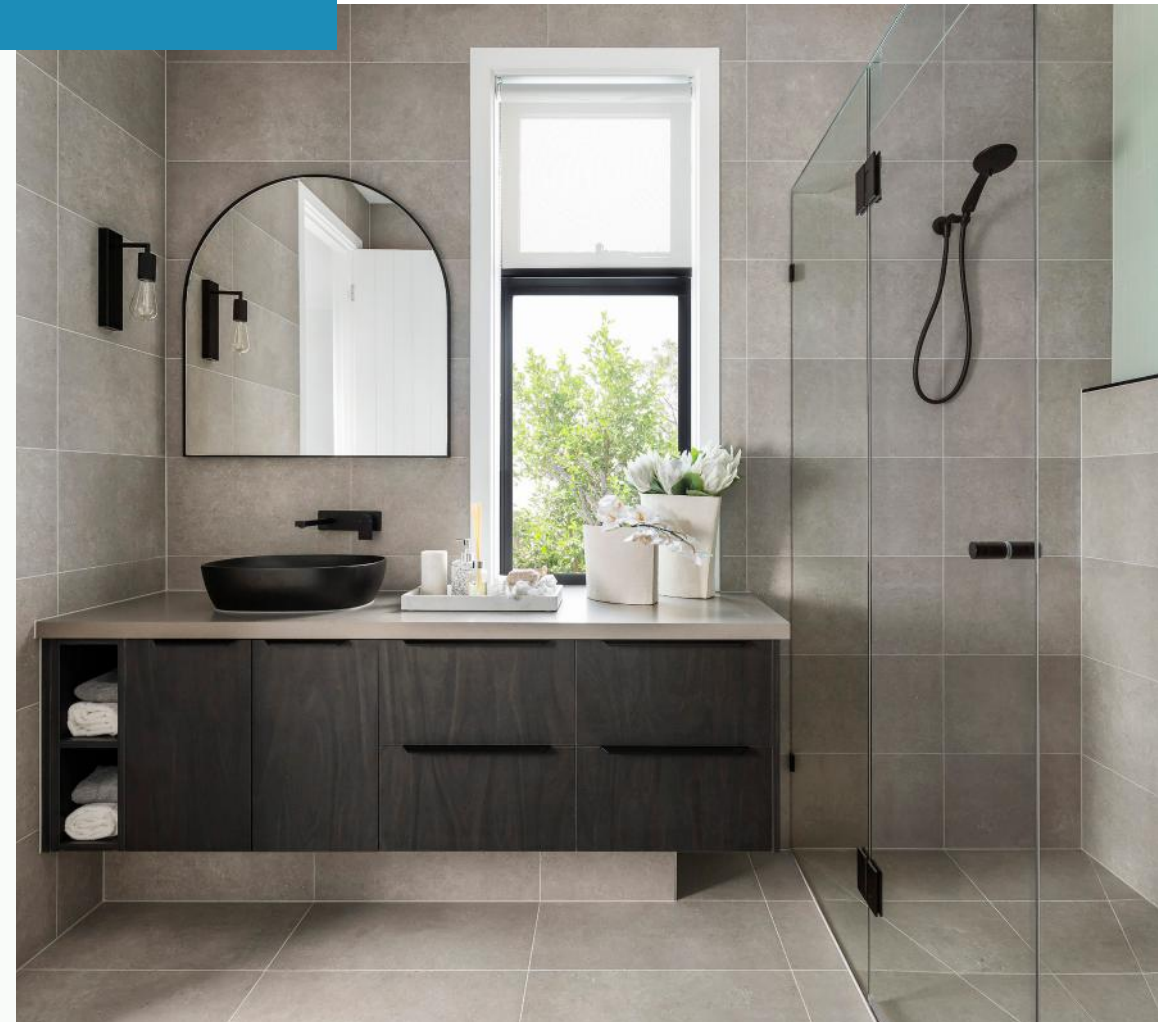
 **Block Size:** 14m x 32m*

House Area (m²) 259.6
House Area (sqg) 27.95
Exterior Length (m) 22.86
Exterior Width (m) 12.6

Floorplan Options: Outdoor Living, Grand Outdoor Living, Powder Room, Rear Flip, Grand Ensuite, Butler's Pantry, Deluxe Kitchen, Study

Other Sizes Available:

28 25 22



If style and space are what you're after, the Norfolk is the perfect home for you. With a luxurious Master Suite and home Theatre at the front, three additional bedrooms privately sectioned to the side, and expansive L-shaped living space with a zoned Kitchen, Laundry & Walk-In Pantry at the rear, this home is ready for easy-living and entertainment.



SCAN FOR OPTIONS & FLOORPLANS



HIA Awards Winner

Winner: 2022 HIA Victoria Housing Awards

'Laundry in a Display Home'

Finalist: 2021 HIA Victoria Housing Awards

'Kitchen in a Display Home'

Finalist: 2021 HIA Victoria Housing Awards

'Display Home \$450 - \$500k'

THE "PACIFIC" FACADE
Available on the Evolve Collection



ON DISPLAY

Minta Estate
Berwick

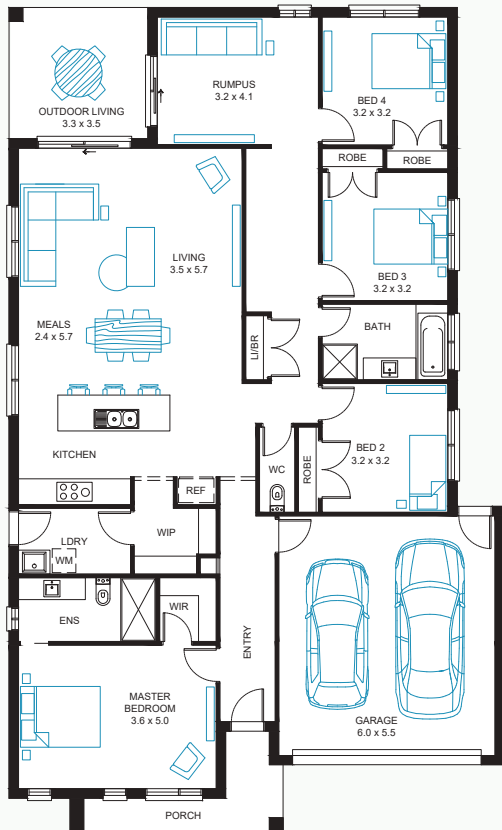


ON DISPLAY

Orana Estate
Clyde North



The Merbau



The Merbau

25 4
2
2

 **Block Size:** 14m x 28m*

House Area (m²) 234.7
House Area (sqg) 25.26
Exterior Length (m) 20.67
Exterior Width (m) 12.6

Floorplan Options: Powder Room, Additional Walk-In Robe, Deluxe Ensuite, Deluxe Kitchen, Grand Outdoor Living, Linen Cabinetry Fit-out, Rear Flip

Other Sizes Available:

27 **22**



The Merbau offers a perfect mix of zoned and open spaces, with a large private Master Suite at the front and multiple entertainment options at the rear, including an open-plan living area and a Rumpus room for the kids.



SCAN FOR OPTIONS & FLOORPLANS



HIA Awards Winner

Winner: 2022 HIA Victoria Housing Awards

'Bathroom in a Display Home up to \$500K' awarded to the Merbau 25 Display Home.

Finalist: 2022 HIA Victoria Housing Awards

'Kitchen in a Display Home up to \$500K' awarded to the Merbau 25 Display Home.

THE "SANDY" FACADE
Available on the Evolve Collection



ON DISPLAY

Orana Estate
Clyde North

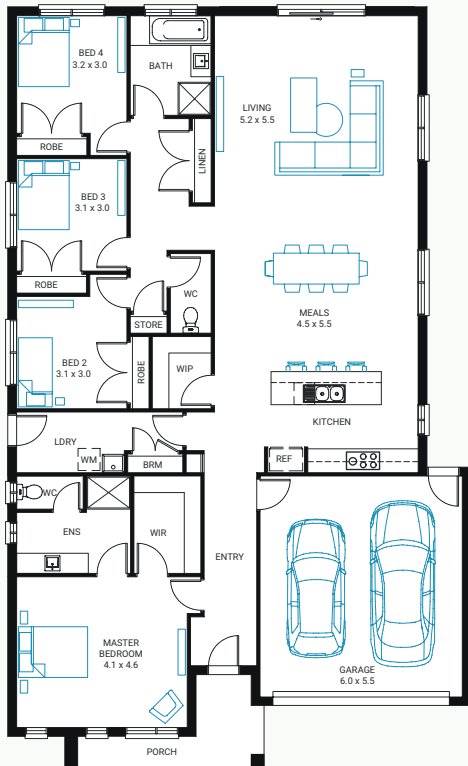




Take a
Virtual Tour



The Murray



The Murray

25 4
2
2

 **Block Size:** 14m x 28m*

House Area (m²) 234.8
House Area (sqg) 25.27
Exterior Length (m) 20.68
Exterior Width (m) 12.6

Floorplan Options: Outdoor Living, U-Shape Kitchen, Butler's Pantry, Fifth Bedroom, Theatre Room, Study, Rear Flip, Alternative Bathroom, Powder Room, Deluxe Kitchen, Walk-in Linen

Other Sizes Available:

22 **19**



The Murray is a design which has found that perfect balance between true relaxation, and plenty of space for entertaining. Starting with a retreat-like master suite at the front, moving through to the expansive open-plan living space on one side, with the equally-private bedrooms on the other.



SCAN FOR OPTIONS & FLOORPLANS



HIA Awards Winner

2020 HIA East Victoria Housing Awards

'Display Home \$300 - \$400k'
awarded to the Murray 25
Display Home.

2021 HIA East Victoria Housing Awards

'Kitchen in a Display Home
up to \$500K' awarded to the
Murray 25 Display Home.

THE "COVE" FACADE
Available on the Evolve Collection



Take a
Virtual Tour

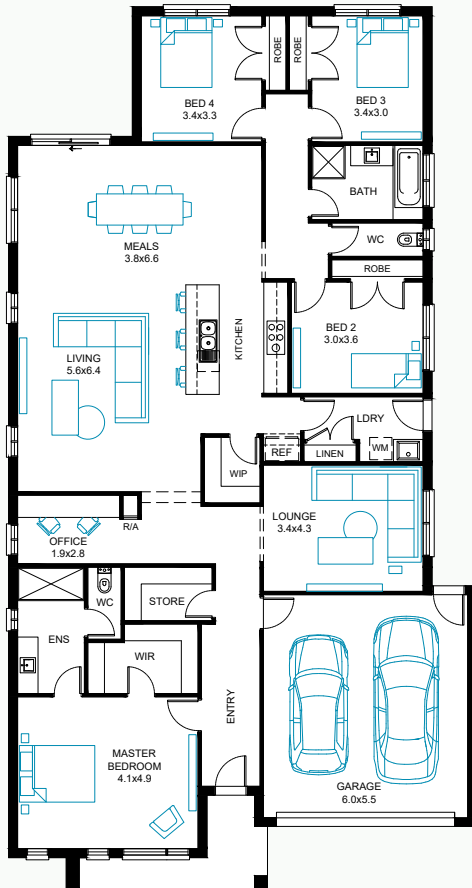


ON DISPLAY

Waterford Estate
Warragul



The Portsea



The Portsea

28 4
2
2

 **Block Size:** 14m x 32m*

House Area (m²) 258.2
House Area (sqg) 27.79
Exterior Length (m) 23.75
Exterior Width (m) 12.6

Floorplan Options: Outdoor Living, Grand Outdoor Living, Powder Option 1, Powder Option 2, Shower To Powder Room, Activity Room, Rear Flip, Fifth Bedroom, Extended Laundry

Other Sizes Available:

27 **25** **22**



For those seeking a design that offers extra leg room, the Portsea has what you're after. This home offers a luxuriously sized Master Bedroom; complete with a large Ensuite & Walk-In Robe to match – as well as a spacious light filled open plan living space to top it all off.



SCAN FOR OPTIONS & FLOORPLANS



HIA Awards Finalist

2022 HIA EAST Victoria Housing Awards

'Display Home \$300K - \$400K' awarded to the Portsea 28 Display Home.

THE "MODE" FACADE
Available on the Evolve Collection

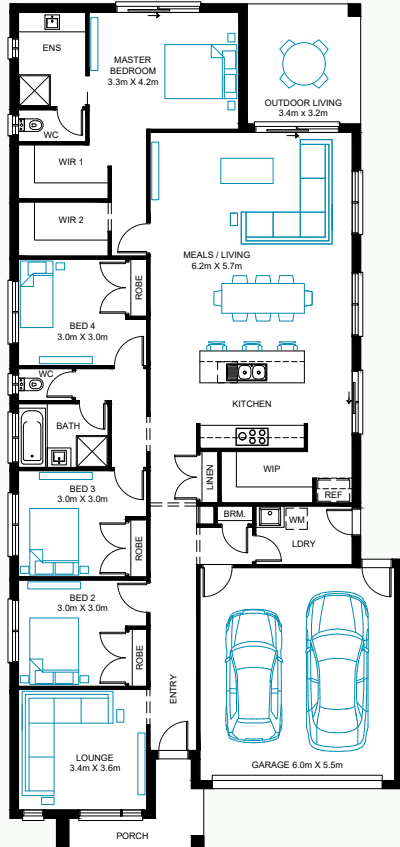


ON DISPLAY


Waterford Estate
Warragul



The Albany



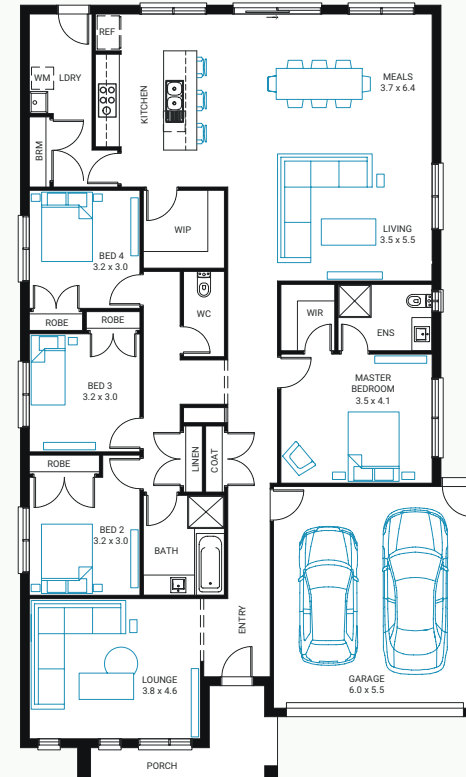
25 4
2
2

 **Block Size:** 12.5m x 32m*

House Area (m ²)	235.2
House Area (sqs)	25.32
Exterior Length (m)	23.84
Exterior Width (m)	11.1

Floorplan Options: Additional Master Suite, Fifth Bedroom, Butler's Pantry, Theatre Room, Study, U-Shape Kitchen, Rear Flip

The Byron



25 4
2
2

 **Other Sizes (Sq):** [23](#) [27](#) [29](#)

 **Block Size:** 14m x 29m*

House Area (m ²)	238.1
House Area (sqs)	25.63
Exterior Length (m)	20.97
Exterior Width (m)	12.6

Floorplan Options: Deluxe Ensuite, Outdoor Living, U-Shape Kitchen, Powder Room



SCAN FOR OPTIONS &
FLOORPLANS

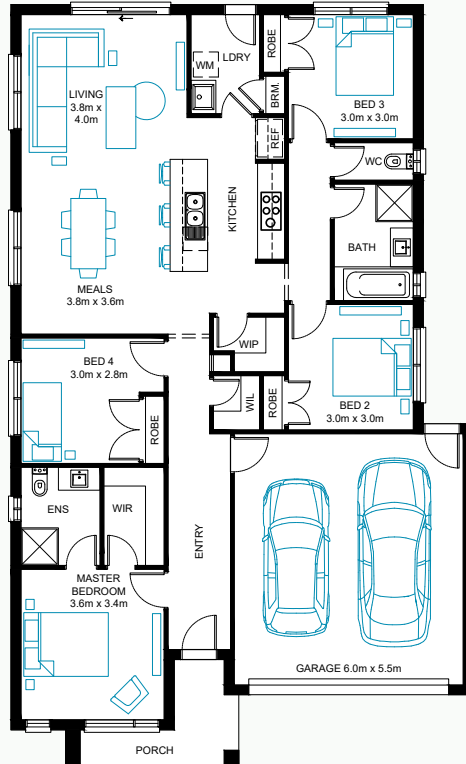
The Albany is all about practical solutions for family living. Features to enjoy include an open plan kitchen overlooking the spacious living & meals area, as well as a private Master Suite at the rear, giving space to unwind.



SCAN FOR OPTIONS &
FLOORPLANS

The Byron comes with all the space you could ask for, and a few extra luxuries for good measure. Featuring four bedrooms with built in robes, along with three living spaces and an entertainers Kitchen - the Byron gives you plenty of space to spread out in.

The Claremont



19

4
2
2

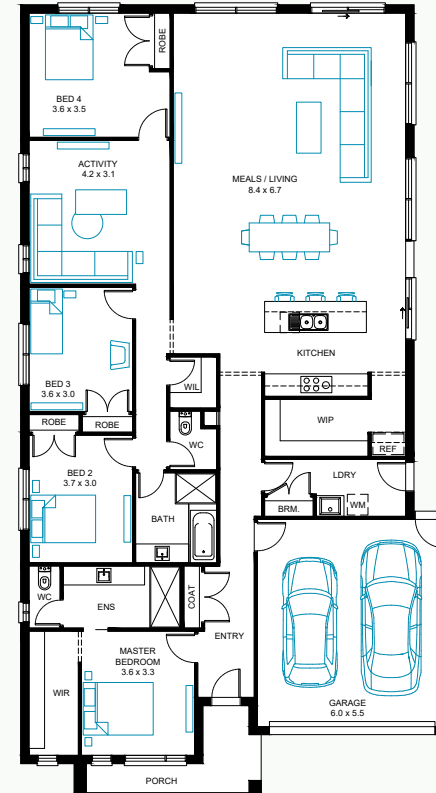
Other Sizes (Sq): **21 24 26**

Block Size: 12.5m x 25m*

House Area (m²) 179.2
House Area (sqsq) 19.29
Exterior Length (m) 18.18
Exterior Width (m) 11.1

Floorplan Options: Deluxe Ensuite, Outdoor Living, Theatre

The Glenelg



27

4
2
2

Other Sizes (Sq): **22 25 32**

Block Size: 14m x 30m*

House Area (m²) 259.4
House Area (sqsq) 27.92
Exterior Length (m) 22.84
Exterior Width (m) 12.6

Floorplan Options: Fifth Bedroom, Additional Walk-in-robe, Office, Outdoor Living, Powder Room, U-Shape Kitchen, Study Nook, Rear Activity Room, Rear Flip

With large families in mind, look no further than the Claremont. Boasting a private Master Suite at the front, and balanced by an additional three Bedrooms and expansive living space at the rear, the Claremont has it all.



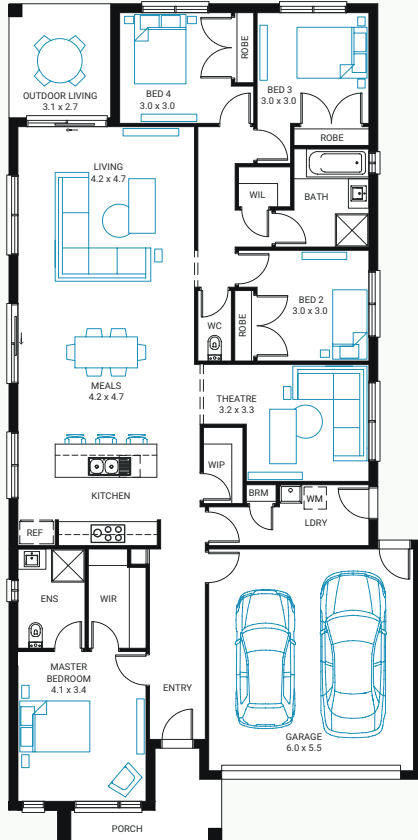
SCAN FOR OPTIONS & FLOORPLANS

For those with a taste for the extravagant, look no further than the Glenelg. Featuring a palatial Master Suite, an additional three spacious Bedrooms, private lounge area and finally, a living space which truly defines the term 'open plan'.



SCAN FOR OPTIONS & FLOORPLANS

The Somers



24 4
2
2

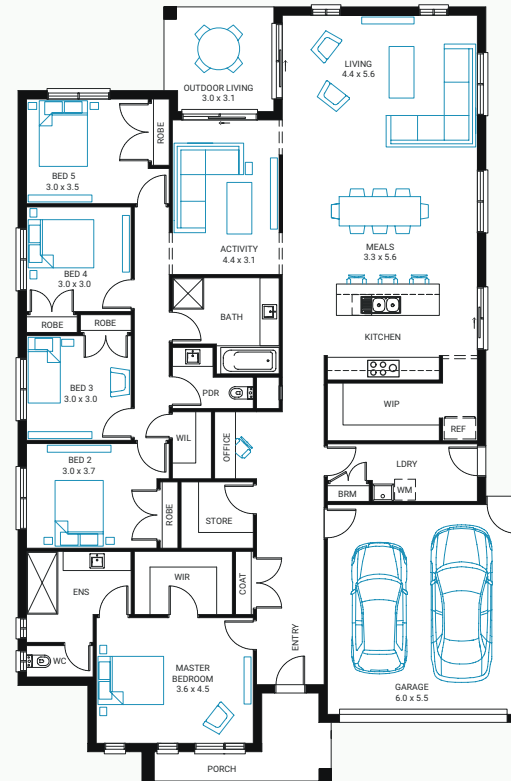
Other Sizes (Sq): 25

Block Size: 12.5m x 30m*

House Area (m²) 223.9
House Area (sq) 24.1
Exterior Length (m) 22.69
Exterior Width (m) 11.1

Floorplan Options: Additional Walk-In Robe, Ensuite Private Water Closet, Deluxe Ensuite, U-Shape Kitchen, Rear Flip

The Sorrento



30 5
2
2

Other Sizes (Sq): 25 27 29

Block Size: 16m x 30m*

House Area (m²) 280.7
House Area (sq) 30.22
Exterior Length (m) 22.18
Exterior Width (m) 14.6

Floorplan Options: Butler's Pantry, Deluxe Ensuite, Grand Outdoor Living, U-Shape Kitchen



SCAN FOR OPTIONS & FLOORPLANS

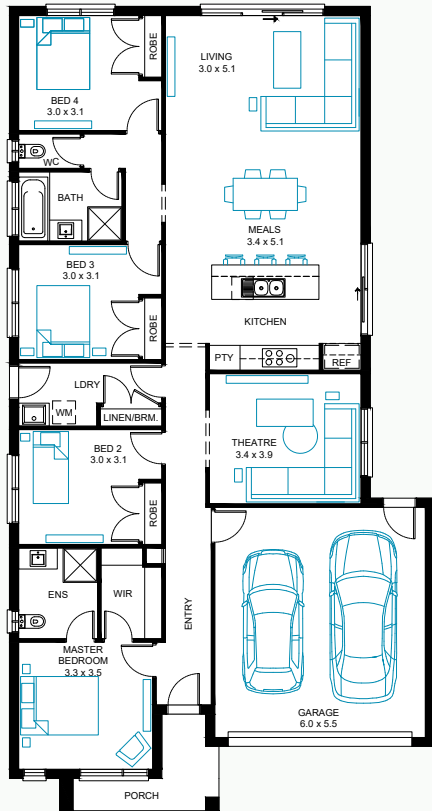
Style and practicality is what you'll get with the Somers. Boasting a generously-sized private Master Suite at the front of the home, and an expansive living space to entertain at the rear, this home design has got you covered.



SCAN FOR OPTIONS & FLOORPLANS

The Sorrento home design is 'the' solution for large families not wanting to compromise on space. Featuring a magnificently-sized private Master Suite at the front of the home, allowing space to separate from the additional four bedrooms, activity and living spaces towards the rear.

The Storm



21

4
2
2

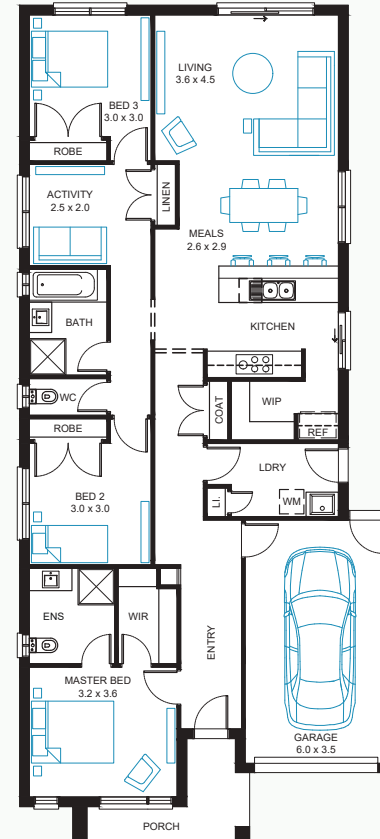
Other Sizes (Sq): 23

Block Size: 12.5m x 28m*

House Area (m²) 201
House Area (sqsq) 21.63
Exterior Length (m) 21
Exterior Width (m) 11.1

Floorplan Options: Deluxe Ensuite, Extended Living, Outdoor Living

The Bondi



18

3
2
1

Block Size: 10.5m x 28m*

House Area (m²) 169.6
House Area (sqsq) 18.25
Exterior Length 20.61m
Exterior Width 9.3m

Floorplan Options: Home Office, Outdoor Living, Rear Master, Deluxe Ensuite, Powder Room

Designed with entertainment in mind, the Storm is the ideal solution for those seeking to separate their digital entertainment from the open plan living, with a dedicated theatre room.



SCAN FOR OPTIONS & FLOORPLANS

The Bondi showcases the best of both worlds. A privately spaced master suite at the front of the home, an activity space between the additional two bedrooms, and a walk-in pantry hidden behind the kitchen that overlooks the living space.



SCAN FOR OPTIONS & FLOORPLANS





Rise

COLLECTION



Our Rise range gives first home buyers and investors a simple, affordable, fast route to building a new home.

Designed for small blocks, each home is compliant with the Small Lot Housing Code, so you can move in without waiting for extra approvals. With clever design and high-quality finishes, our homes are both practical and stylish, maximizing light and space for comfortable living.

Scan to view our full collection of Rise designs online.



Save with our SHLC compliant 'Rise' collection.

We have designed the homes in our Rise Collection so that they are "Small Housing Lot Code (SLHC)" compliant. This means we save you not only the expense of a Planning Permit but also the time awaiting Council planning approvals.

Rise Facade Options



The Acacia

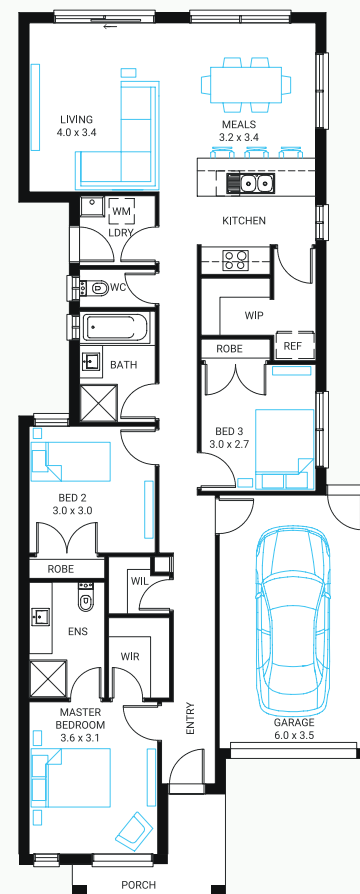
16³₂₁

Other Sizes (Sq): 17

Block Size: 8.5m x 26.5m*

House Area (m ²)	145.8
House Area (sqm)	15.69
Exterior Length (m)	20.98
Exterior Width (m)	8.5

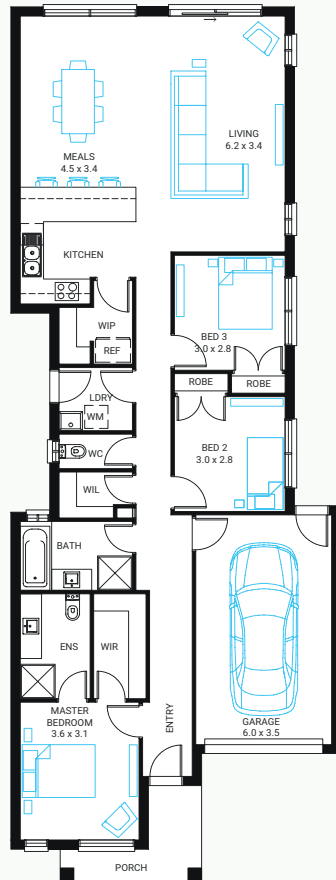
Floorplan Options: Deluxe Ensuite, Rear Master Bedroom



SCAN FOR OPTIONS & FLOORPLANS

Designed with narrow blocks in mind, the Acacia presents a clever use of space. Live in comfort with three bedrooms, and a spacious open plan living area with plenty of natural light coming through the side and rear windows.

The Banksia



17 3
2
1

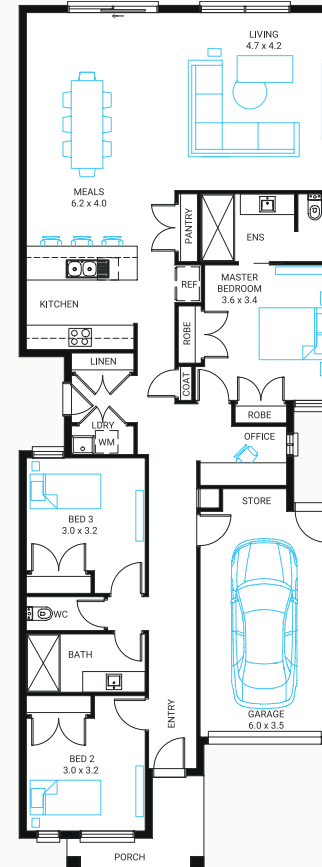
Other Sizes (Sq): 16

Block Size: 8.5m x 28m*

House Area (m²) 160.2
House Area (sqs) 17.25
Exterior Length 22.84m
Exterior Width 8.5m

Floorplan Options: Deluxe Ensuite, Forth Bedroom, Outdoor Living

The Edge



19 3
2
1

Other Sizes (Sq): 16 17

Block Size: 8.5m x 30m*

House Area (m²) 176.2
House Area (sqs) 18.98
Exterior Length 22.98m
Exterior Width 8.5m

Floorplan Options: Deluxe Bathroom, U Shape Kitchen, Outdoor Living, Conventional Laundry, WIR

A fantastic choice for narrow blocks, the Banksia comes fitted with three bedrooms, two bathrooms and a generously sized kitchen and living area; perfect for entertaining.



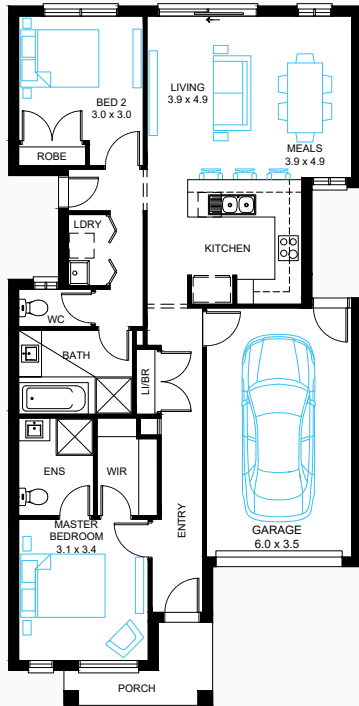
SCAN FOR OPTIONS & FLOORPLANS

Making the most of a narrow block of land, may we introduce the Edge. This design cleverly makes use of every bit of space available; each bedroom coming fitted with large walk-in robes, additional linen & coat cupboards as well as extra storage space in the garage.



SCAN FOR OPTIONS & FLOORPLANS

The Tea Tree



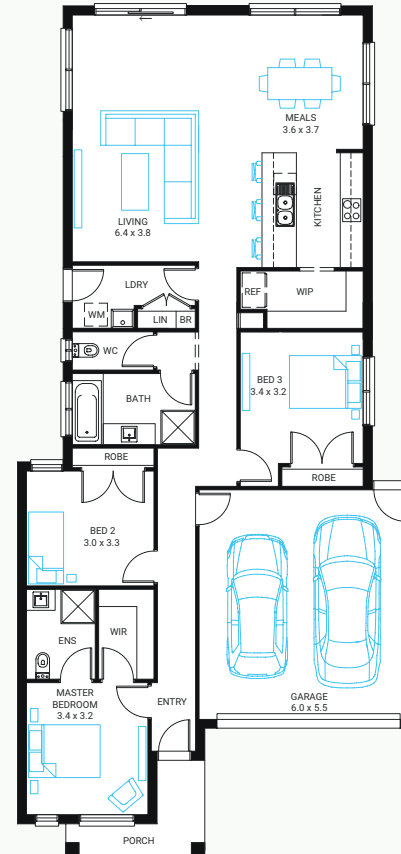
13 2
2
1

 **Block Size:** 8.5m x 22m*

House Area (m²) 123.9
House Area (sqsq) 13.33
Exterior Length (m) 16.84
Exterior Width (m) 8.5

Floorplan Options: Deluxe Ensuite,
Third Bedroom

The Wattle



20 3
2
2

 **Block Size:** 10.5m x 28m*

House Area (m²) 184.3
House Area (sqsq) 19.84
Exterior Length (m) 22.22
Exterior Width (m) 10.5

Floorplan Options: Fourth Bedroom,
Deluxe Ensuite, Outdoor Living, Rear Flip,
Rear Master Bedroom



SCAN FOR OPTIONS &
FLOORPLANS

The Tea Tree's unique design showcases a clever use of space for narrow blocks - neatly fitting in all the modern day essentials while offering a functional sense of depth to the home.



SCAN FOR OPTIONS &
FLOORPLANS

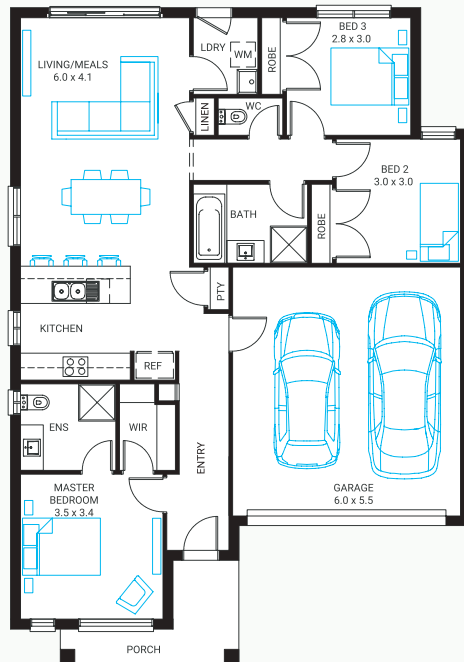
If you're looking for a home with an emphasis on convenient living, the Wattle gives just the very thing. Offering three generously-sized bedrooms, matched with a well-lit living space to the rear, and a sizeable Walk-In Pantry neatly tucked away behind the Kitchen.

The Correa

The Point

16

3
2
2



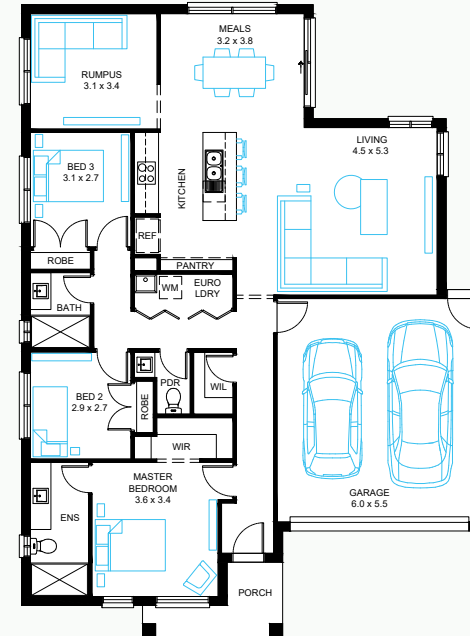
Block Size: 12.5m x 21m*

House Area (m²) 152.2
House Area (sqs) 16.39
Exterior Length (m) 15.84
Exterior Width (m) 11.1

Floorplan Options: Deluxe Ensuite, Extended Meals/Living, U Shape Kitchen

19

3
2
2



Block Size: 14m x 21m*

House Area (m²) 175.1
House Area (sqs) 18.85
Exterior Length (m) 16.97
Exterior Width (m) 12.6

Floorplan Options: U Shape Kitchen, Rear Flip Rumpus, Rear Flip, Skylight, Rumpus Cavity Sliding Door, WIR Cavity Sliding Door, Meals Entertainer, Outdoor Living

Designed especially for smaller blocks, the Correa's design features all the essentials for modern day living including three Bedrooms, two Bathrooms and a comfortably sized living & meals area.



SCAN FOR OPTIONS & FLOORPLANS

Designed especially for a small wide block, the Point is surprisingly spacious. In addition to the three Bedrooms, two Bathrooms and comfortably sized living & meals area, the Point also features a Rumpus room at the rear - perfect for families requiring multiple entertainment options.



SCAN FOR OPTIONS & FLOORPLANS

Affordable,
high-quality
homes without
compromising
on excellence.



THE "ELWOOD 33" - ON DISPLAY AT KADUNA PARK ESTATE, OFFICER SOUTH



THE "LORNE 40" - ON DISPLAY AT MERIDIAN ESTATE, CLYDE NORTH





For current Display Home locations and open hours, visit our website:



Head Office & Harmony Gallery

552 Frankston-Dandenong Rd, Carrum Downs, Victoria, 3201

Phone: (03) 9770 8806 **Email:** info@beachwood-homes.com.au

Web: beachwood-homes.com.au



* Size may vary dependant on façade. Refer to working drawings for complete dimensions.

Disclaimer: Facade Images are for illustrative purposes and may depict features not supplied by Beachwood Homes including landscaping, fencing, window furnishings, wall furnishings, decorative lighting, décor, furniture & flat profile roof tiles (some of these items may be available at an additional cost) they may also vary between house type and house size selected. Windows, front entry doors and frames are commonly altered to the façade to suit room layouts in different house designs and to suit different house widths. Please refer to the specific master drawings of the house type and size selected for the exact façade details.

© Beachwood Homes Pty Ltd CDB-U 51671