


BYRON 23



The Byron comes with all the space you could ask for, and a few extra luxuries for good measure. Featuring four bedrooms with built in robes, along with three living spaces and an entertainers kitchen - the Byron gives you plenty of space to spread out in.

Designed to suit 14m x 27m block*

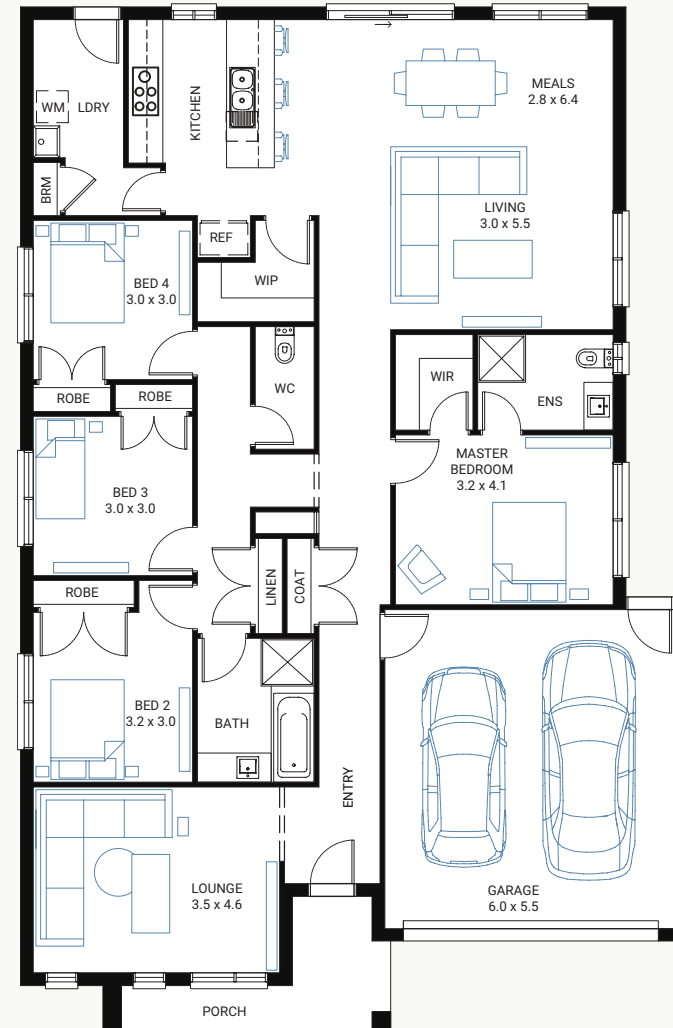
House Area (m ²)	219m ²
House Area (sqsq)	23.58
Exterior Length	19.27m
Exterior Width	12.6m

Floor Plan Options

Deluxe Ensuite, Powder Room, U Shape Kitchen

Available Facades

Mode, Mode MK1, Chalet, Chalet MK1,
Pinnacle MK1–MK4, Matrix, Kingdom, Cove, Country





BYRON 25



The Byron comes with all the space you could ask for, and a few extra luxuries for good measure. Featuring four bedrooms with built in robes, along with three living spaces and an entertainers kitchen - the Byron gives you plenty of space to spread out in.

Designed to suit 14m x 29m block*

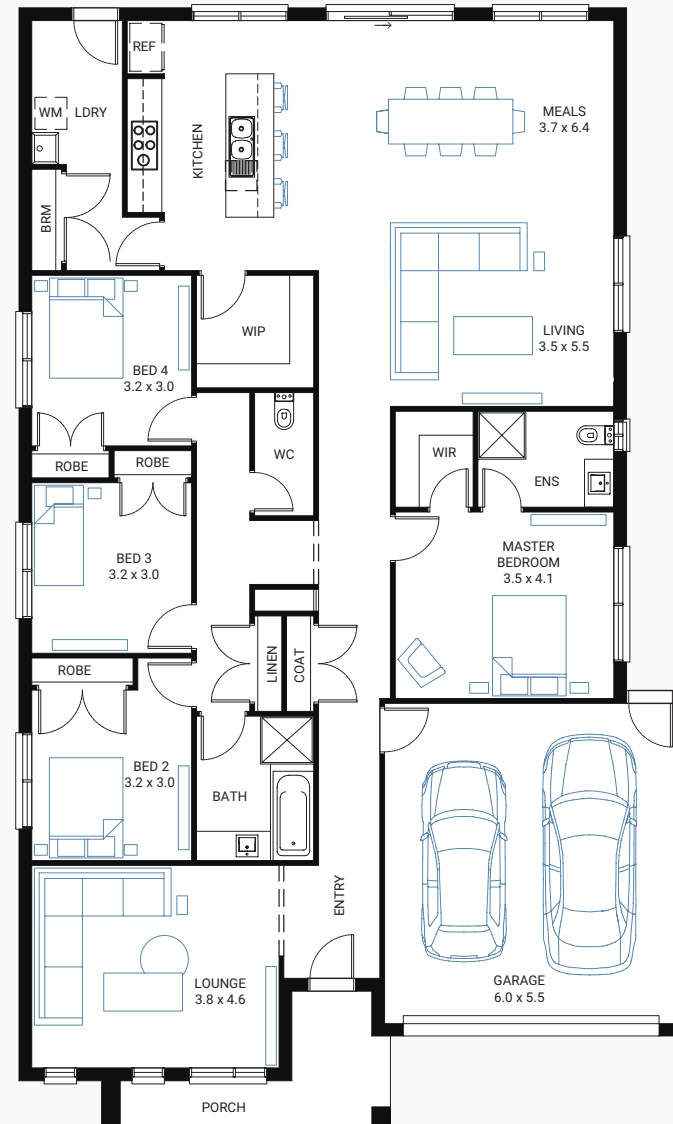
House Area (m ²)	238.1m ²
House Area (sqsq)	25.63
Exterior Length	20.97m
Exterior Width	12.6m

Floor Plan Options

Deluxe Ensuite, Outdoor Living, U Shape Kitchen, Powder Room

Available Facades

Mode, Mode MK1, Chalet, Chalet MK1, Pinnacle MK1–MK4, Matrix, Kingdom, Cove, Country



BYRON 27



The Byron comes with all the space you could ask for, and a few extra luxuries for good measure. Featuring four bedrooms with built in robes, along with three living spaces and an entertainers kitchen - the Byron gives you plenty of space to spread out in.

Designed to suit 14m x 31m block*

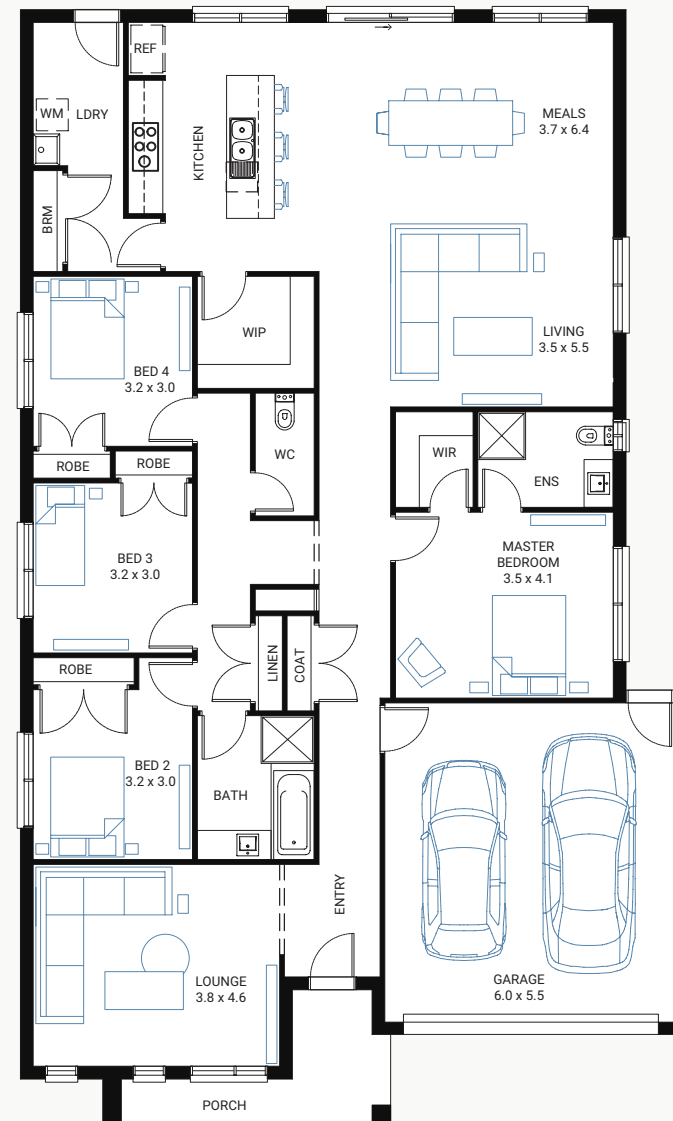
House Area (m ²)	259.6m ²
House Area (sqsq)	27.95
Exterior Length	22.86m
Exterior Width	12.6m

Floor Plan Options

Fifth Bedroom, Deluxe Ensuite, Outdoor Living,
U Shape Kitchen, Powder Room

Available Facades

Mode, Mode MK1, Chalet, Chalet MK1,
Pinnacle MK1–MK4, Matrix, Kingdom, Cove, Country



BYRON 29



The Byron comes with all the space you could ask for, and a few extra luxuries for good measure. Featuring four bedrooms with built in robes, along with three living spaces and an entertainers kitchen - the Byron gives you plenty of space to spread out in.

Designed to suit 14m x 33m block*

House Area (m ²)	272.4m ²
House Area (sqsq)	29.32
Exterior Length	23.98m
Exterior Width	12.6m

Floor Plan Options

Fifth Bedroom, Deluxe Ensuite, Outdoor Living, U Shape Kitchen, Powder Room

Available Facades

Mode, Mode MK1, Chalet, Chalet MK1, Pinnacle MK1–MK4, Matrix, Kingdom, Cove, Country

