

# LORNE 31



For large families, you could do no better than the Lorne. Not only does this imaginative design offer as many as five bedrooms, but also three substantial living spaces to spread out in as well. With a separate study to work in, and a walk-in-pantry to surround yourself in, this design offers you all the space you could ask for.

## Designed to suit 14m x 25m block\*

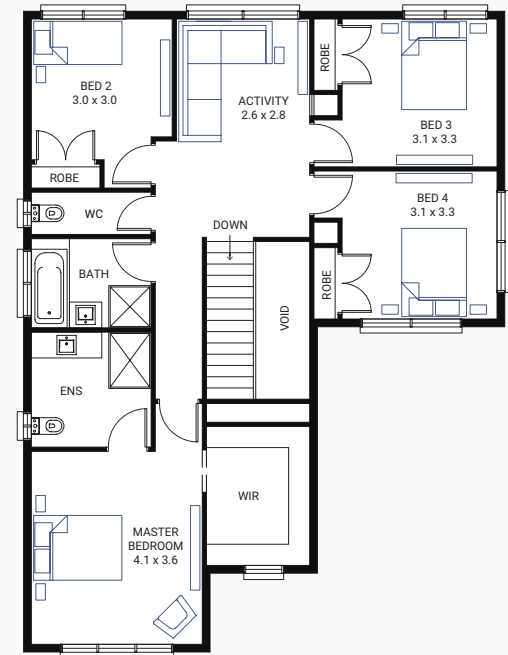
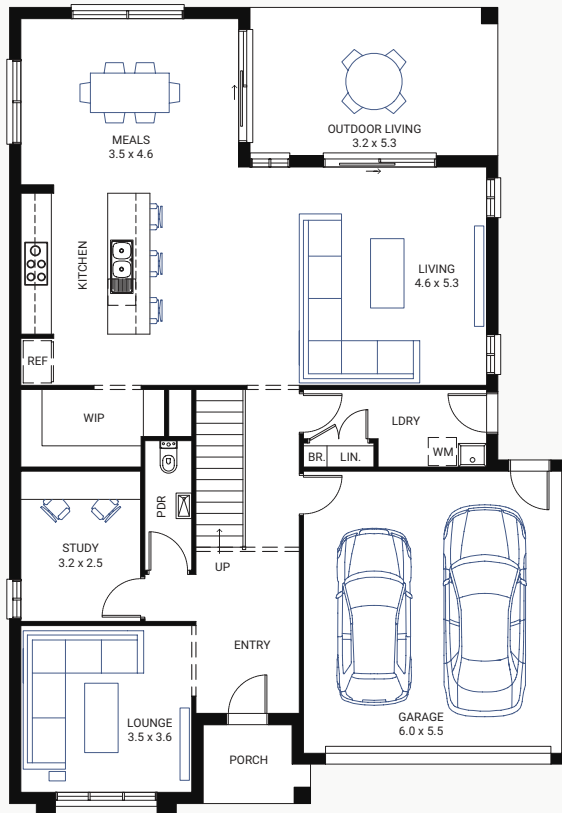
House Area (m <sup>2</sup> )	291.9m <sup>2</sup>
House Area (sqgs)	31.42
Exterior Length	17.2
Exterior Width	12m

## Floor Plan Options

Base, Grand First Floor Master Suite, Ground Floor Rear Flip, Ground Floor Master Suite, First Floor Activity Room, Kitchen (As Displayed), Butler's Pantry, Balcony

## Available Facades

Classic, Century, Bay, Cape, Peninsula



# LORNE 34



For large families, you could do no better than the Lorne. Not only does this imaginative design offer as many as five bedrooms, but also three substantial living spaces to spread out in as well. With a separate study to work in, and a walk-in-pantry to surround yourself in, this design offers you all the space you could ask for.

## Designed to suit 14m x 25m block\*

House Area (m <sup>2</sup> )	320.1m <sup>2</sup>
House Area (sqs)	34.45
Exterior Length	17.2m
Exterior Width	12m

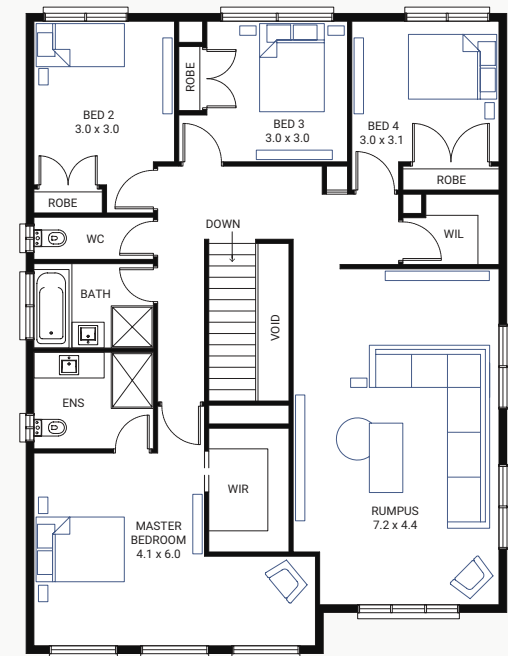
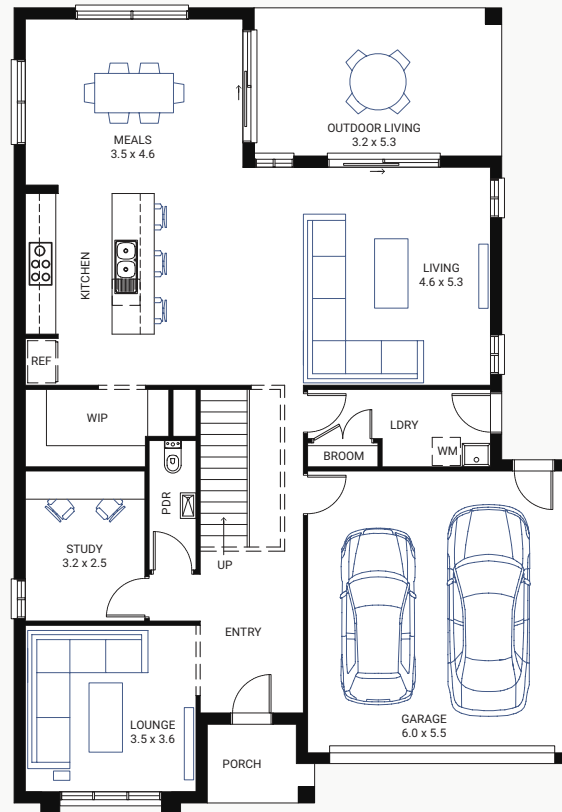
## Floor Plan Options

Base, Ground Floor Master Suite, Grand First Floor Master Suite, Kitchen (As Displayed), Butler's Pantry, Ground Floor Rear Flip, Balcony Option 1, Balcony Option 2

## Available Facades

Classic, Century, Bay, Cape, Peninsula

ON DISPLAY



---

# LORNE 38

---



For large families, you could do no better than the Lorne. Not only does this imaginative design offer as many as five bedrooms, but also three substantial living spaces to spread out in as well. With a separate study to work in, and a walk-in-pantry to surround yourself in, this design offers you all the space you could ask for.

---

## Designed to suit 14m x 25m block\*

---

House Area (m <sup>2</sup> )	352.5m <sup>2</sup>
House Area (sqgs)	37.94
Exterior Length	17.2m
Exterior Width	12m

---

### Floor Plan Options

Base, Ground Floor Master Suite, Fifth Bedroom, Kitchen (As Displayed), Butler's Pantry, Ground Floor Rear Flip, Balcony Option 1, Balcony Option 2

---

### Available Facades

Classic, Century, Bay, Cape, Peninsula

---

