

---



# CLAREMONT 19

---

 4  2  2  12.5

---

With large families in mind, look no further than the Claremont. Boasting a private master suite and home theatre at the front, balanced by an additional four bedrooms and expansive living space at the rear, the Claremont has it all.

---

**Designed to suit 12.5m x 25m block\***

---

House Area (m <sup>2</sup> )	179.6m <sup>2</sup>
House Area (sqsq)	19.33
Exterior Length	18.18m
Exterior Width	11.1m

---

## Floor Plan Options

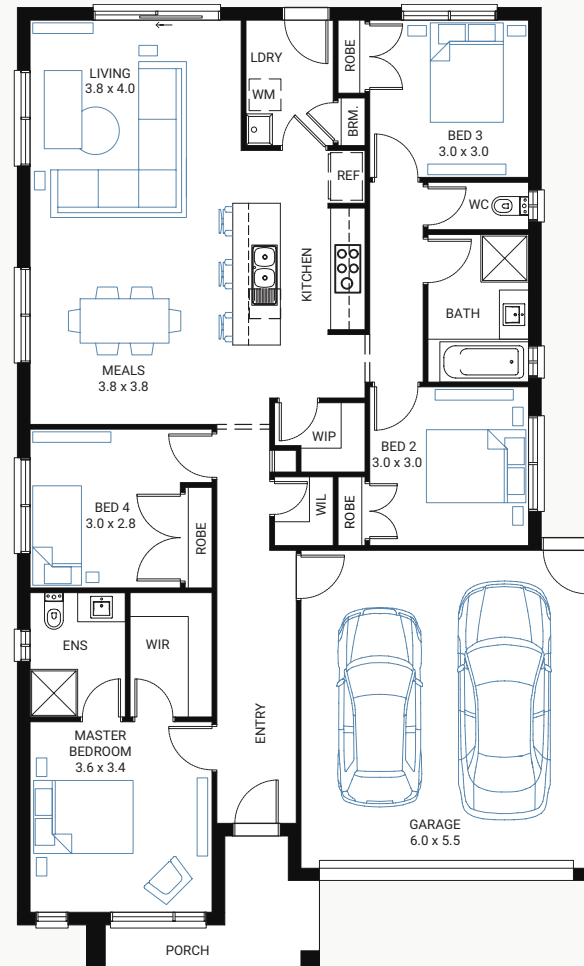
Deluxe Ensuite, Outdoor Living

---

## Available Facades

Mode, Mode MK1, Chalet, Chalet MK1,  
Pinnacle MK1–MK4, Matrix, Kingdom, Cove, Country

---



---



# CLAREMONT 21

---

 3  2  2  12.5

---

With large families in mind, look no further than the Claremont. Boasting a private master suite and home theatre at the front, balanced by an additional four bedrooms and expansive living space at the rear, the Claremont has it all.

---

**Designed to suit 12.5m x 28m block\***

---

House Area (m <sup>2</sup> )	195.7m <sup>2</sup>
House Area (sqgs)	21.07
Exterior Length	19.81m
Exterior Width	11.1m

---

## Floor Plan Options

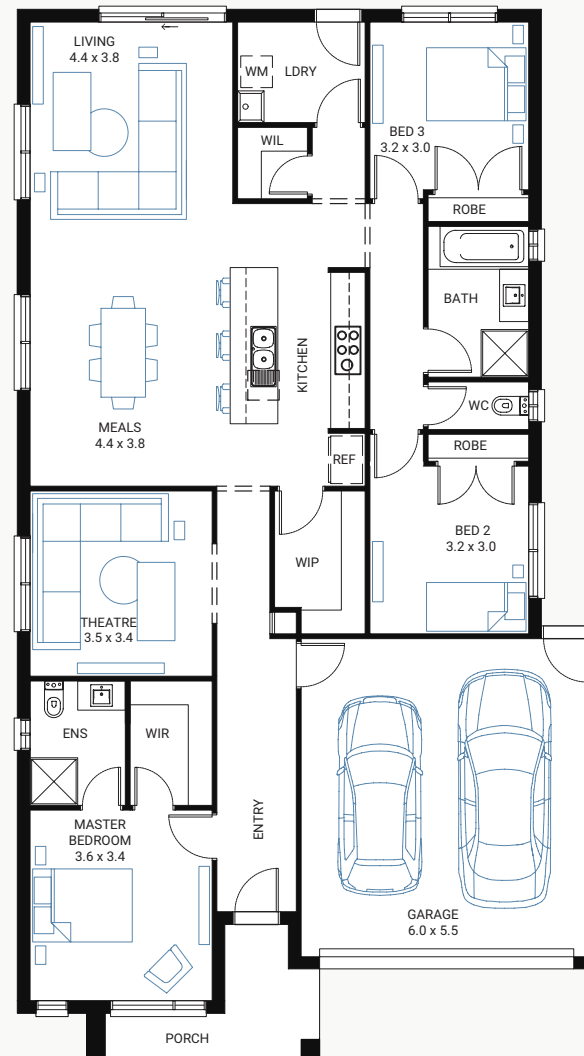
Deluxe Ensuite, Outdoor Living, Powder Room, Fourth Bedroom

---

## Available Facades

Mode, Mode MK1, Chalet, Chalet MK1,  
Pinnacle MK1–MK4, Matrix, Kingdom, Cove, Country

---



# CLAREMONT 24

 4
  2
  2
  12.5

With large families in mind, look no further than the Claremont. Boasting a private master suite and home theatre at the front, balanced by an additional four bedrooms and expansive living space at the rear, the Claremont has it all.

**Designed to suit 12.5m x 31m block\***

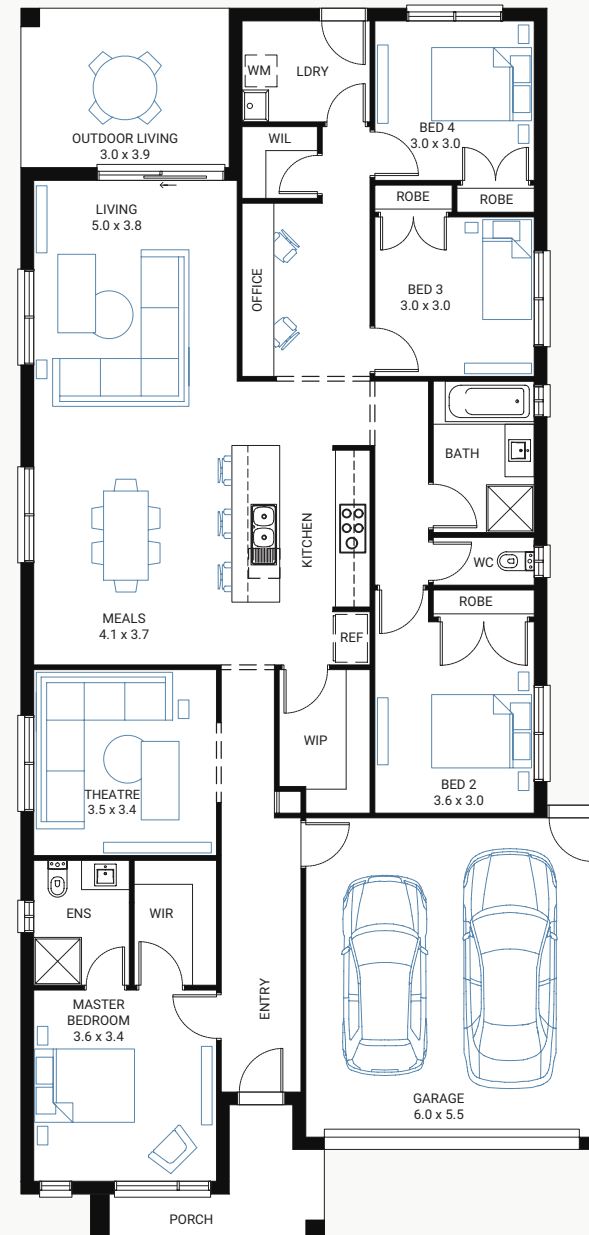
House Area (m <sup>2</sup> )	228.9m <sup>2</sup>
House Area (sqsq)	24.64
Exterior Length	23.16m
Exterior Width	11.1m

## Floor Plan Options

Fifth Bedroom, Deluxe Ensuite, Powder Room

## Available Facades

Mode, Mode MK1, Chalet, Chalet MK1, Pinnacle MK1–MK4, Matrix, Kingdom, Cove, Country



# CLAREMONT 26

5 2 2 12.5

With large families in mind, look no further than the Claremont. Boasting a private master suite and home theatre at the front, balanced by an additional four bedrooms and expansive living space at the rear, the Claremont has it all.

**Designed to suit 12.5m x 33m block\***

House Area (m <sup>2</sup> )	242.7m <sup>2</sup>
House Area (sqs)	26.13
Exterior Length	24.56m
Exterior Width	11.1m

## Floor Plan Options

Sixth Bedroom, Deluxe Ensuite, Games Room, Additional WIR, Grand Outdoor Living, Powder Room

## Available Facades

Mode, Mode MK1, Chalet, Chalet MK1, Pinnacle MK1–MK4, Matrix, Kingdom, Cove, Country

