

# Merbau 22

Evolve  
COLLECTION



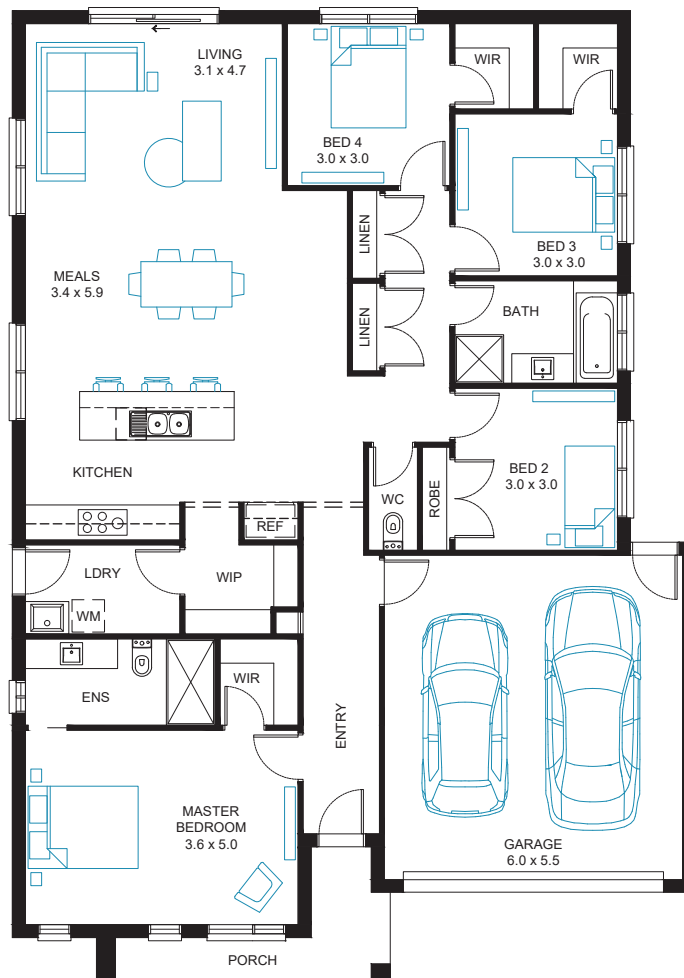
Designed to suit a  
14m x 25m block†.

## Home Measurements

Home Length	18.00m
Home Width	12.60m
Residence	160.6m <sup>2</sup>
Garage	37.2m <sup>2</sup>
Porch	6.4m <sup>2</sup>
<b>Total</b>	<b>204.2m<sup>2</sup></b>

## Customisable Floorplan\*

- Powder Room
- Additional WIR
- As Displayed Ensuite
- As Displayed WIP
- As Displayed Kitchen
- Outdoor Living
- Rear Passage Cavity Sliding Door



\* Additional costs will be charged for any Structural Options selected.

† Minimum lot size is subject to selected facade, design options and any applicable restrictions on selected lot (building envelopes, easements, developer guidelines).

# Merbau 25

Evolve  
COLLECTION



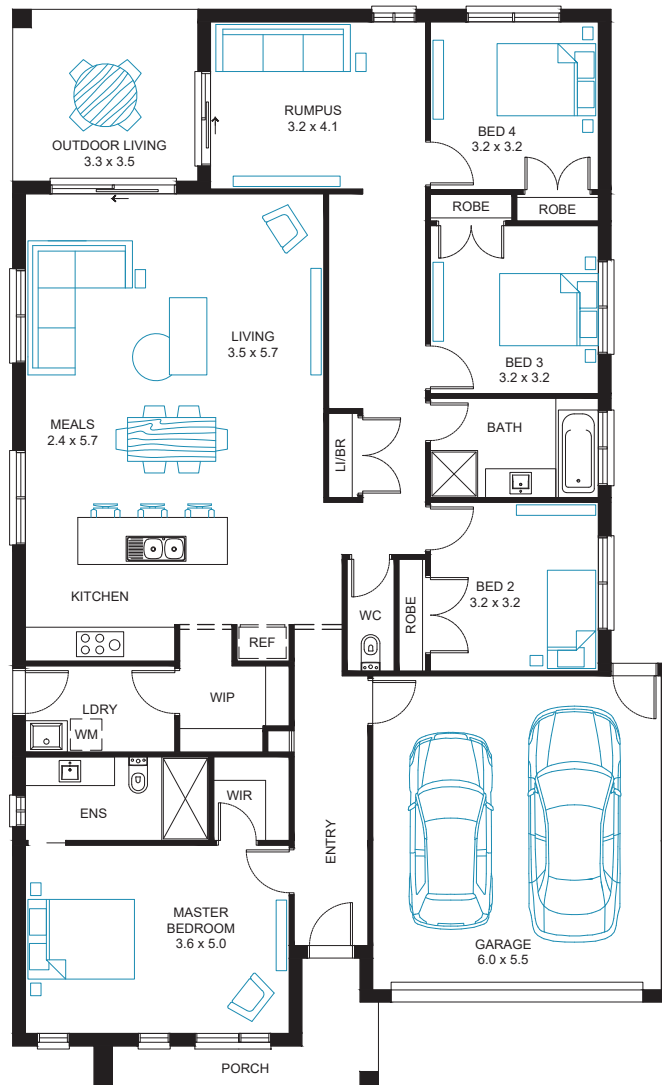
Designed to suit a  
14m x 28m block†.

## Home Measurements

Home Length	20.67m
Home Width	12.60m
Residence	179.4m <sup>2</sup>
Garage	37.2m <sup>2</sup>
Porch	6.4m <sup>2</sup>
<b>Total</b>	<b>234.7m<sup>2</sup></b>

## Customisable Floorplan\*

- Powder Room
- Additional WIR
- As Displayed Ensuite
- As Displayed WIP
- As Displayed Kitchen
- Outdoor Living
- Linen Cabinetry Fitout
- Rear Passage Cavity Sliding Door
- Rear Flip



\* Additional costs will be charged for any Structural Options selected.

† Minimum lot size is subject to selected facade, design options and any applicable restrictions on selected lot (building envelopes, easements, developer guidelines).

# Merbau 27

Evolve  
COLLECTION



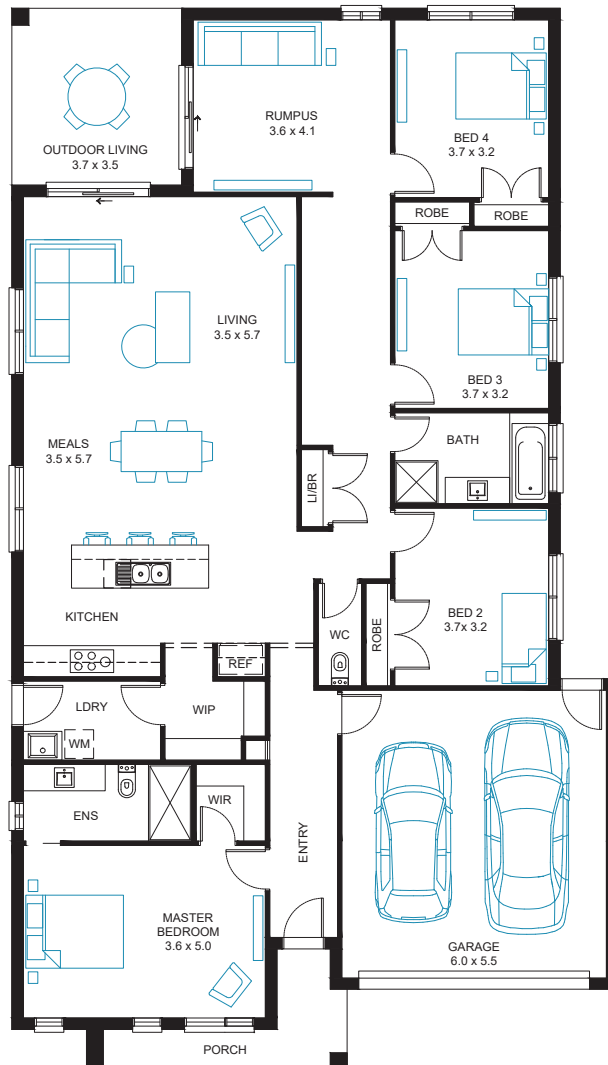
Designed to suit a  
14m x 30m block†.

## Home Measurements

Home Length	22.15m
Home Width	12.60m
Residence	194.9m <sup>2</sup>
Garage	37.2m <sup>2</sup>
Porch	6.4m <sup>2</sup>
Outdoor Living	13.0m <sup>2</sup>
<b>Total</b>	<b>251.5m<sup>2</sup></b>

## Customisable Floorplan\*

- Powder Room
- Additional WIR
- As Displayed Ensuite
- As Displayed WIP
- As Displayed Kitchen
- Outdoor Living
- Linen Cabinetry Fitout
- Rear Passage Cavity Sliding Door
- Rear Flip



\* Additional costs will be charged for any Structural Options selected.

† Minimum lot size is subject to selected facade, design options and any applicable restrictions on selected lot (building envelopes, easements, developer guidelines).