
ELWOOD 28

3 2 2 12.5

Masterfully designed with indoor and outdoor living in mind. The Elwood makes a statement, offering you spacious entertainment options on each level - with four generously sized bedrooms to retreat to at the end of the day.

Designed to suit 12.5m x 25m block*

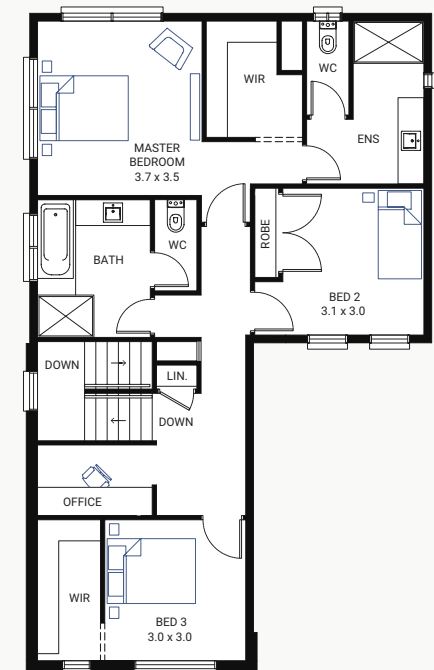
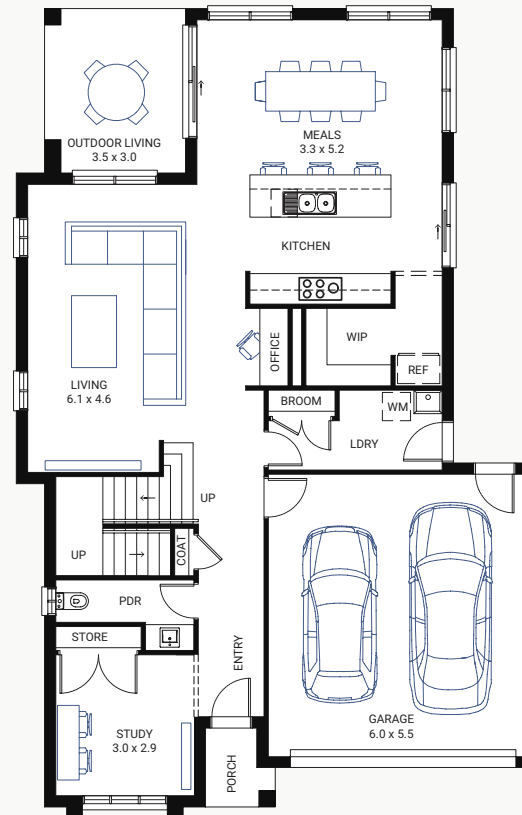
House Area (m ²)	254.3m ²
House Area (sqgs)	27.37
Exterior Length	17.83m
Exterior Width	11.1m

Floor Plan Options

Ground Floor Rear Flip, Laundry Chute, Shower To Powder Room, Additional Master Suite, Butler's Pantry, Fourth Bedroom, Balcony Option

Available Facades

Classic, Century, Bay, Cape, Peninsula



ELWOOD 29

3 2 2 12.5

Masterfully designed with indoor and outdoor living in mind. The Elwood makes a statement, offering you spacious entertainment options on each level - with four generously sized bedrooms to retreat to at the end of the day.

Designed to suit 12.5m x 25m block*

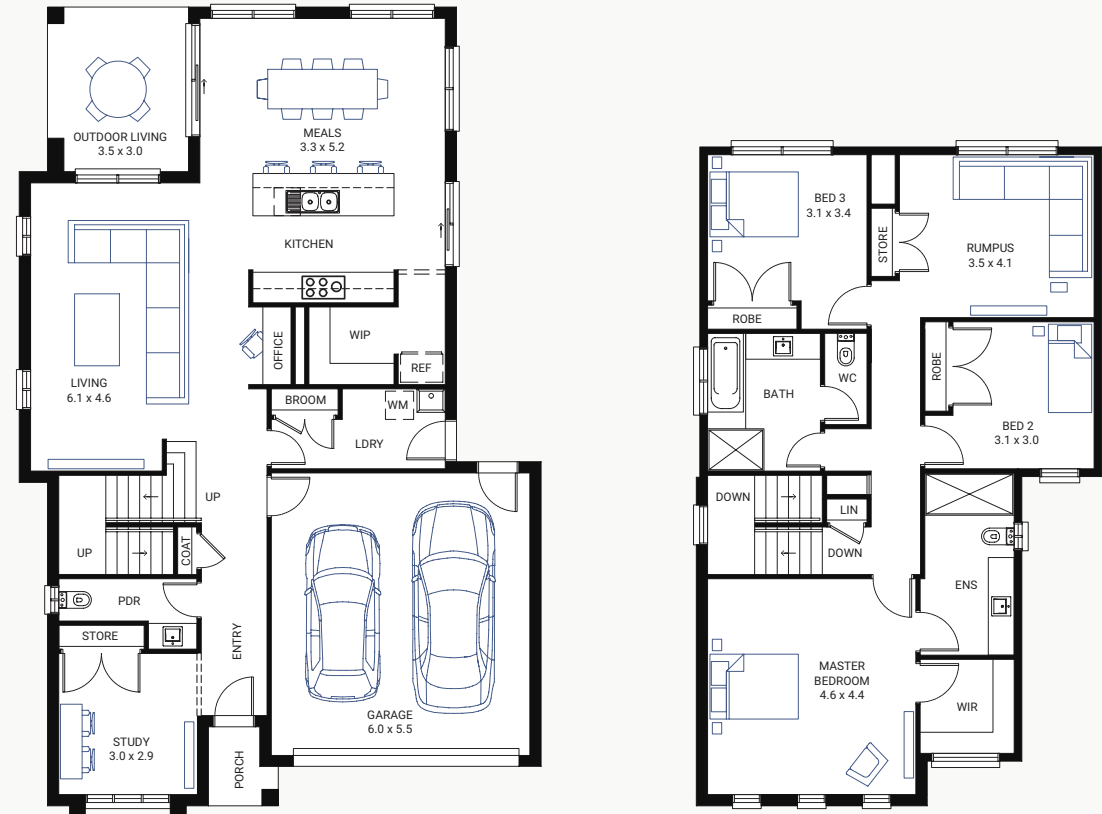
House Area (m ²)	267m ²
House Area (sqsq)	28.74
Exterior Length	17.38m
Exterior Width	11.1m

Floor Plan Options

Ground Floor Rear Flip, Laundry Chute, Shower To Powder Room, Additional Master Suite, Butler's Pantry, Master Bedroom Dual Robes, Fourth Bedroom, Balcony Option

Available Facades

Classic, Century, Bay, Cape, Peninsula



ELWOOD 30



Masterfully designed with indoor and outdoor living in mind. The Elwood makes a statement, offering you spacious entertainment options on each level - with four generously sized bedrooms to retreat to at the end of the day.

Designed to suit 12.5m x 25m block*

House Area (m ²)	279.8m ²
House Area (sqs)	30.12
Exterior Length	17.83m
Exterior Width	11.1m

Floor Plan Options

Ground Floor Rear Flip, Laundry Chute, Shower To Powder Room, Additional Master Suite, Butler's Pantry, Balcony Option

Available Facades

Classic, Century, Bay, Cape, Peninsula

