

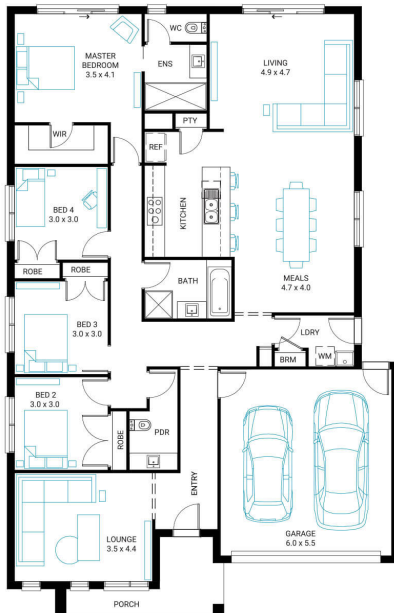


## Dune 24

4  2  2 

**Address**  
Lot 1416, Kingbird, Botanic Ridge, 3977

**Facade Mode**      **Lot Width** 14      **Lot size** 448 m<sup>2</sup>      **House size** 223 m<sup>2</sup>



### Your Inclusions

- 'Fisher & Paykel' stainless steel appliances (900mm)
- Engineered stone benchtops with 20mm edge profile to Kitchen.
- Laminate overhead cupboards with concealed rangehood to Kitchen
- Towel rails, soap dishes & toilet roll holders to wet areas
- Tiled shower bases to Bathroom and Ensuite
- Built in laundry laminate unit with inset trough
- Flooring throughout (tiles and carpet)
- Bristle Classic low profile roof tiles
- 'Colorbond' sectional overhead door with automated lifter and remote controls
- Insect Screens with fibreglass mesh to all openable windows.
- Gas ducted heating with ceiling outlets to Bedrooms and all Living areas.
- 25 Year Structural Warranty
- 6 Star Energy Rating

Package Enquiries  
Simon Leung - 0427 966 292,  
simon@beachwood-homes.com.au

