

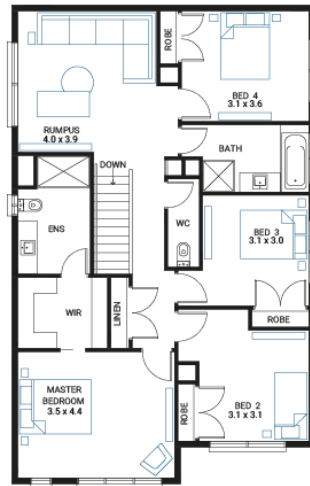
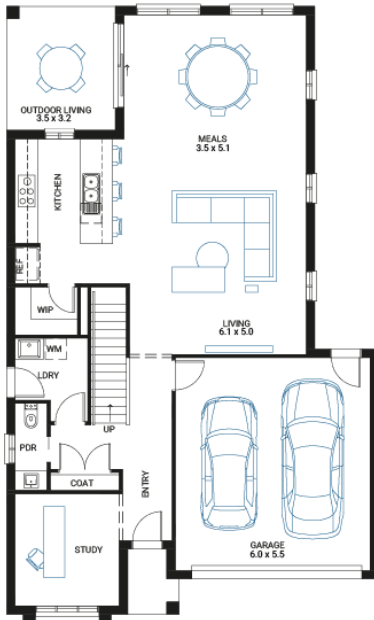


Gunnamatta 29 ●

4 2 2

Address
Lot 3924, Meridian, Clyde North, 3978

Facade Bay	Lot Width	Lot size	House size
	12.5	493 m ²	269 m ²



Available Structural Options

First Floor Powder Room, As Displayed Kitchen, Extended Laundry & Kitchen, As Displayed Grand Outdoor Living, Rear Flip, Bedroom 5, Shower to Powder, Balcony 1, Balcony 2,

Your Inclusions

- Double glazing to all fully glazed aluminium external windows and sliding doors.
- `Fisher and Paykel` stainless steel appliances (900mm)
- Engineered stone benchtops with 20mm edge profile to Kitchen.
- 2550mm ceiling heights to Ground Floor areas.
- Laminate overhead cupboards with concealed rangehood to Kitchen
- Towel rails and toilet roll holders to wet areas
- Tiled shower bases to Bathroom and Ensuite
- Built in laundry laminate unit with inset trough
- Flooring throughout (tiles and carpet)
- `Colorbond` Metal Roof
- Insect Screens with fibreglass mesh to all openable windows.
- Gas ducted heating with ceiling outlets to Bedrooms and all Living areas.
- `Dulux` Wash and Wear 3 Coat paint system to internal walls.
- 25 Year Structural Warranty

Package Enquiries
Jack Cole - 0477 284 777,
jack@beachwood-homes.com.au

MERIDIAN
LIFE HOMES