

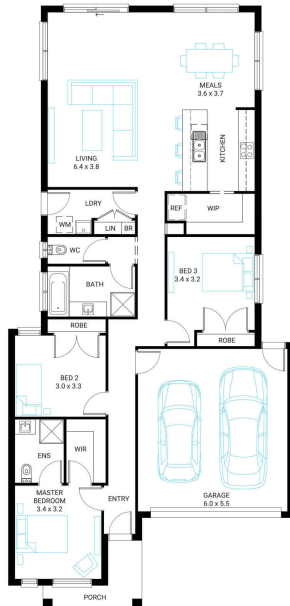


## Wattle 20



**Address**  
Lot 3048, Alira, Berwick, 3806

**Facade** Broad  
**Lot Width** 10.5  
**Lot size** 281 m<sup>2</sup>  
**House size** 184 m<sup>2</sup>



### Available Structural Options

Deluxe Ensuite, Outdoor Living, Fourth Bedroom, Rear Master, Rear Flip,

### Your Inclusions

- Double glazing to windows and doors (as required) to comply with 6 Star energy rating.
- `Fisher and Paykel` stainless steel appliances (600mm)
- Laminate overhead cupboards with slide out rangehood to Kitchen
- Towel rails and toilet roll holders to wet areas
- Flooring throughout (tiles and carpet)
- Insect Screens with fibreglass mesh to all openable windows.
- Gas ducted heating with ceiling outlets to Bedrooms and all Living areas.
- `Dulux` Wash and Wear 3 Coat paint system to internal walls.
- 25 Year Structural Warranty

Package Enquiries  
Courtney Berry - 0409 449 841,  
courtney@beachwood-homes.com.au