

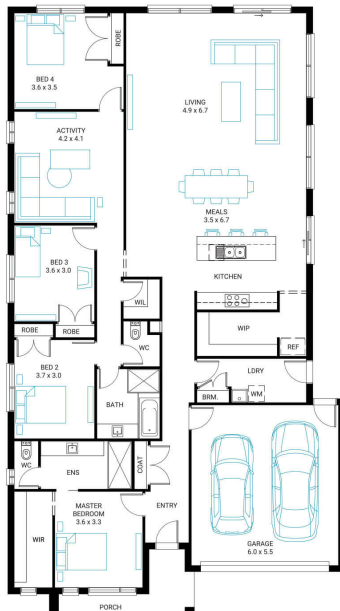


## Glenelg 27



**Address**  
Lot 579, Parklands, Wonthaggi, 3995

**Facade** Kingdom  
**Lot Width** 14  
**Lot size** 1012 m<sup>2</sup>  
**House size** 259 m<sup>2</sup>



### Available Structural Options

Outdoor Living, Powder Room, Fifth Bedroom, U Shape Kitchen, Additional WIR, Office, Rear Flip,

### Your Inclusions

- FHOG Applied!!
- Double glazing to all fully glazed aluminium external windows and sliding doors.
- `Fisher and Paykel` stainless steel appliances (900mm)
- Engineered stone benchtops with 20mm edge profile to Kitchen.
- Laminate overhead cupboards with concealed rangehood to Kitchen
- Towel rails and toilet roll holders to wet areas
- Tiled shower bases to Bathroom and Ensuite
- Built in laundry laminate unit with inset trough
- Flooring throughout (tiles and carpet)
- Bristle Classic low profile roof tiles
- `Colorbond` sectional overhead door with automated lifter and remote controls
- Insect Screens with fibreglass mesh to all openable windows.
- Gas ducted heating with ceiling outlets to Bedrooms and all Living areas.
- `Dulux` Wash and Wear 3 Coat paint system to internal walls.
- 25 Year Structural Warranty

Package Enquiries  
Casey Moyle - 0416 119 281,  
casey@beachwood-homes.com.au

