

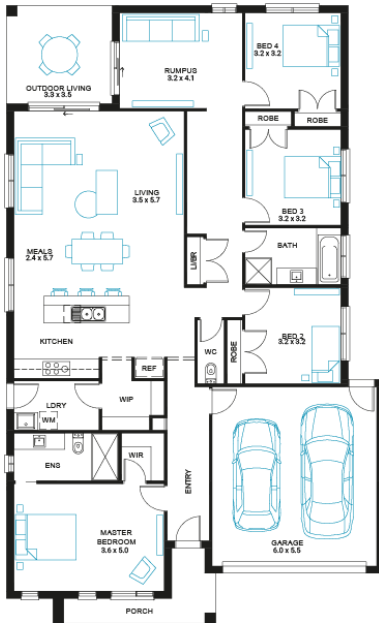


Merbau 25

4 2 2

Address
Lot 4117, Meridian, Clyde North, 3978

Facade Chalet MK1	Lot Width 14	Lot size 438 m ²	House size 179 m ²
--------------------------------	------------------------	---------------------------------------	---



Available Structural Options

Powder Room, Additional WIR, As Displayed Ensuite, As Displayed WIP, As Displayed Kitchen, Outdoor Living, Linen Cabinetry Fitout, Rear Flip,

Your Inclusions

- Double glazing to all fully glazed aluminium external windows and sliding doors.
- 'Fisher and Paykel' stainless steel appliances (900mm)
- Engineered stone benchtops with 20mm edge profile to Kitchen.
- Laminate overhead cupboards with concealed rangehood to Kitchen
- Towel rails and toilet roll holders to wet areas
- Tiled shower bases to Bathroom and Ensuite
- Built in laundry laminate unit with inset trough
- Flooring throughout (tiles and carpet)
- Bristle Classic low profile roof tiles
- 'Colorbond' sectional overhead door with automated lifter and remote controls
- Insect Screens with fibreglass mesh to all openable windows.
- Gas ducted heating with ceiling outlets to Bedrooms and all Living areas.
- 'Dulux' Wash and Wear 3 Coat paint system to internal walls.
- 25 Year Structural Warranty

Package Enquiries
Jack Cole - 0477 284 777,
jack@beachwood-homes.com.au

MERIDIAN
CLYDE NORTH