

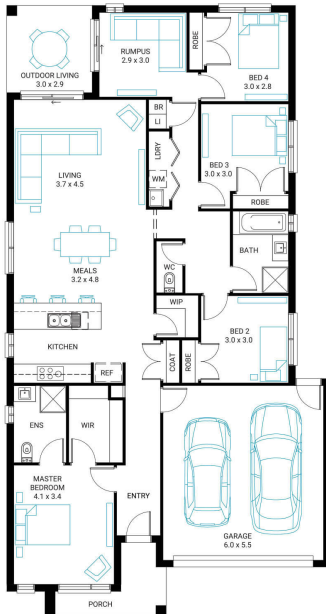


## Wave 22

4 2 2

**Address**  
Lot 10, Proposed Development, Morwell, 3840

**Facade** Cove      **Lot Width** 12.5      **Lot size** 609 m<sup>2</sup>      **House size** 207 m<sup>2</sup>



### Available Structural Options

Rear Flip, Conventional Laundry, Fifth Bedroom, Deluxe Ensuite, Powder Room, U Shape Kitchen, Grand Outdoor Living, Rear Master Bedroom,

### Your Inclusions

- FHOG Applied!
- Double glazing to all fully glazed aluminium external windows and sliding doors.
- 'Fisher and Paykel' stainless steel appliances (900mm)
- Engineered stone benchtops with 20mm edge profile to Kitchen.
- Laminate overhead cupboards with concealed rangehood to Kitchen
- Towel rails and toilet roll holders to wet areas
- Tiled shower bases to Bathroom and Ensuite
- Built in laundry laminate unit with inset trough
- Flooring throughout (tiles and carpet)
- Bristle Classic low profile roof tiles
- 'Colorbond' sectional overhead door with automated lifter and remote controls
- Insect Screens with fibreglass mesh to all openable windows.
- Gas ducted heating with ceiling outlets to Bedrooms and all Living areas.
- 'Dulux' Wash and Wear 3 Coat paint system to internal walls.
- 25 Year Structural Warranty

Package Enquiries  
Casey Moyle - 0416 119 281,  
casey@beachwood-homes.com.au

