

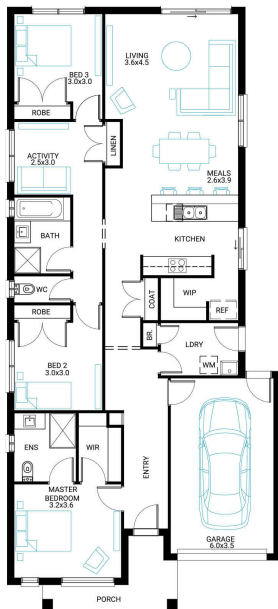


## Bondi 18

3 2 1

**Address**  
Lot 331, Officer Central, Officer, 3809

**Facade** Central  
**Lot Width** 10.5  
**Lot size** 294 m<sup>2</sup>  
**House size** 140 m<sup>2</sup>



### Available Structural Options

Home Office, Outdoor Living, Rear Master, Deluxe Ensuite, Powder Room,

### Your Inclusions

- 'H' class waffle concrete slab
- Double glazing throughout
- Insect Screens with fibreglass mesh throughout
- Dimmable LED downlights to main Living areas
- Flooring throughout (tiles and carpet)
- 'Quantum Quartz' engineered stone benchtops with 20mm edge profile
- 900mm Kitchen Appliances
- Laminate overhead cupboards with concealed rangehood to Kitchen
- Tiled shower bases to Bathroom and Ensuite
- Gas ducted heating
- 'Colorbond' sectional overhead door with automated lifter and remote controls
- Solar PV system
- 25-year structural guarantee
- 12-month maintenance period
- 7-Star energy rating compliance
- Trusted New Home Builder in Melbourne, Victoria for over 25 years

Package Enquiries  
Gemma Rosbiffi - 0409 801 884 ,  
gemma@beachwood-homes.com.au

**OfficerCentral**