



Edge 19

3 2 1

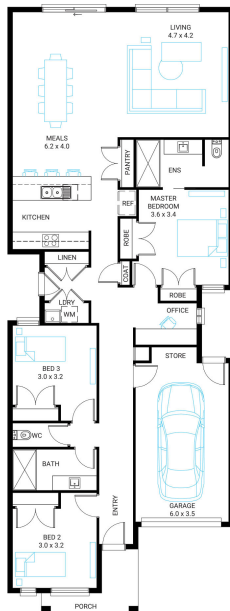
Address
Lot 313, Kingbird, Botanic Ridge, 3977

Facade
Gable
MK1

Lot Width
8.5

Lot size
225 m²

House size
176 m²



Available Structural Options

Deluxe Bathroom, U Shape Kitchen, Outdoor Living, Conventional Laundry, WIR,

Your Inclusions

- Double glazing to all fully glazed aluminium external windows and sliding doors.
- 'Fisher and Paykel' stainless steel appliances (600mm)
- Laminate overhead cupboards with concealed rangehood to Kitchen
- Towel rails and toilet roll holders to wet areas
- Tiled shower bases to Bathroom and Ensuite
- Flooring throughout (tiles and carpet)
- 'Colorbond' sectional overhead door with automated lifter and remote controls
- Insect Screens with fibreglass mesh to all openable windows.
- Gas ducted heating with ceiling outlets to Bedrooms and all Living areas.
- 'Dulux' Wash and Wear 3 Coat paint system to internal walls.
- 25 Year Structural Warranty

Package Enquiries
Gemma Rosbiffi - 0409 801 884 ,
gemma@beachwood-homes.com.au

