



## Norfolk 25



**Address**  
Lot 526, The Fairways, Drouin, 3818

**Facade**  
Pacific

Lot Width  
19

**Lot size**  
532 m<sup>2</sup>

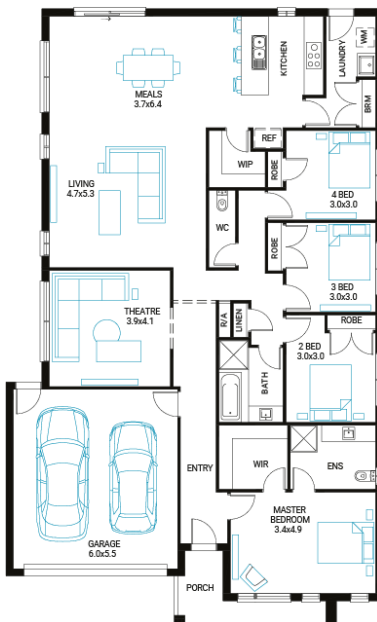
**House size**  
235 m<sup>2</sup>

## Available Structural Options

Butlers Pantry, Deluxe Ensuite, Powder Room, Deluxe Kitchen, Outdoor Living, Grand Outdoor Living, Study,

## Your Inclusions

- 'H' class concrete slab
- Double glazing throughout
- Insect Screens with fibreglass mesh throughout
- Dimmable LED downlights to main Living areas
- Flooring throughout (tiles and carpet)
- 'Quantum Quartz' engineered stone benchtops with 20mm edge profile, to Kitchen
- 900mm Kitchen Appliances
- Laminate overhead cupboards with concealed rangehood to Kitchen
- Tiled shower bases to Bathroom and Ensuite
- Gas ducted heating
- 'Colorbond' sectional overhead door with automated lifter and remote controls
- Solar PV system
- 25-year structural guarantee
- 12-month maintenance period
- 7-Star energy rating compliance
- Trusted New Home Builder in Melbourne, Victoria for over 25 years



Package Enquiries  
Abbey Cole - 0448 421 941,  
[abbey@beachwood-homes.com.au](mailto:abbey@beachwood-homes.com.au)

## THE FAIRWAYS