

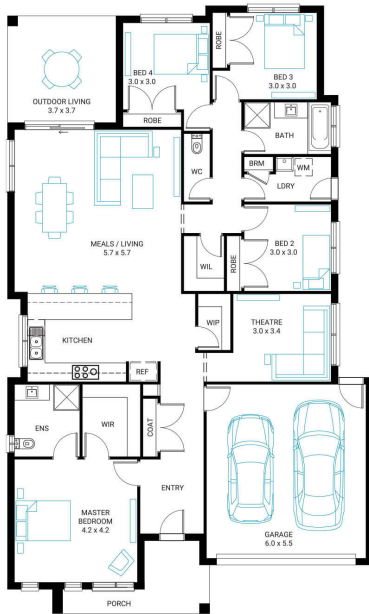


## Somers 25

4 2 2

**Address**  
Lot 516, Octave, Junction Village, 3977

**Facade** Sandy  
**Lot Width** 14  
**Lot size** 392 m<sup>2</sup>  
**House size** 233 m<sup>2</sup>



### Available Structural Options

Deluxe Ensuite, Rear Flip, Activity, Extended Meals,

### Your Inclusions

- 'H' class waffle concrete slab
- Double glazing throughout
- Insect Screens with fibreglass mesh throughout
- Dimmable LED downlights to main Living areas
- Flooring throughout (tiles and carpet)
- 'Quantum Quartz' engineered stone benchtops with 20mm edge profile
- 900mm Kitchen Appliances
- Laminate overhead cupboards with concealed rangehood to Kitchen
- Tiled shower bases to Bathroom and Ensuite
- Gas ducted heating
- 'Colorbond' sectional overhead door with automated lifter and remote controls
- Solar PV system
- 25-year structural guarantee
- 12-month maintenance period
- 7-Star energy rating compliance
- Trusted New Home Builder in Melbourne, Victoria for over 25 years

Package Enquiries  
Gemma Rosbiffi - 0409 801 884 ,  
gemma@beachwood-homes.com.au

ΘCTAVE