

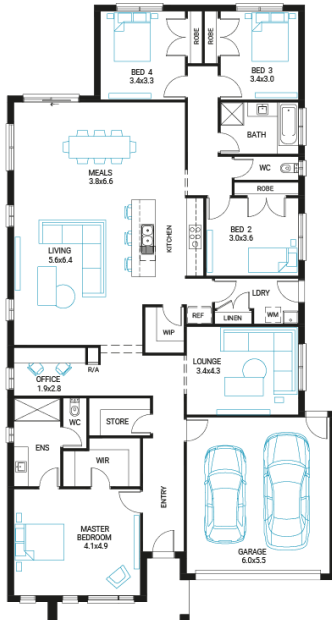


## Portsea 28

4 2 2

**Address**  
Lot 3015, Ferntree Ridge, Drouin, 3818

**Facade** Kingdom  
**Lot Width** 19  
**Lot size** 587 m<sup>2</sup>  
**House size** 258 m<sup>2</sup>



### Available Structural Options

Outdoor Living, Grand Outdoor Living, Powder Option 1, Powder Option 2, Shower To Powder, Activity Room, Rear Flip, Fifth Bedroom, Extended Laundry,

### Your Inclusions

- Double glazing to all fully glazed aluminium external windows and sliding doors.
- 'Fisher and Paykel' stainless steel appliances (900mm)
- Engineered stone benchtops with 20mm edge profile to Kitchen.
- Laminate overhead cupboards with concealed rangehood to Kitchen
- Towel rails and toilet roll holders to wet areas
- Tiled shower bases to Bathroom and Ensuite
- Built in laundry laminate unit with inset trough
- Flooring throughout (tiles and carpet)
- Bristle Classic low profile roof tiles
- 'Colorbond' sectional overhead door with automated lifter and remote controls
- Insect Screens with fibreglass mesh to all openable windows.
- Gas ducted heating with ceiling outlets to Bedrooms and all Living areas.
- 'Dulux' Wash and Wear 3 Coat paint system to internal walls.
- 25 Year Structural Warranty

Package Enquiries  
Abbey Cole - 0448 421 941,  
abbey@beachwood-homes.com.au

