

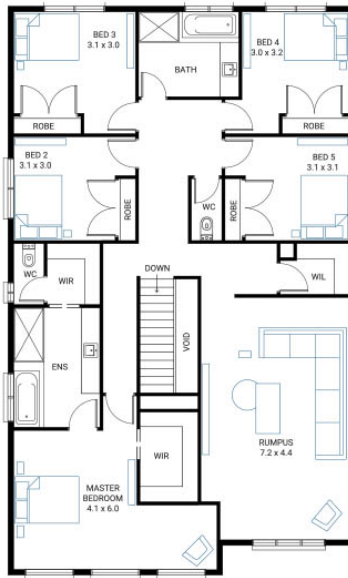
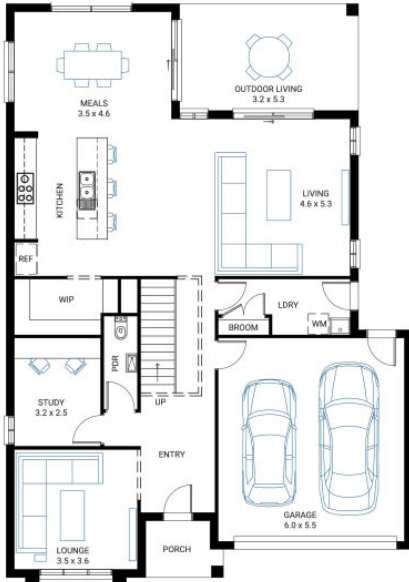


## Lorne 38 ●



**Address**  
Lot 6917, Waterford Rise, Warragul, 3820

**Facade** Cape Mk1    **Lot Width** 14    **Lot size** 510 m<sup>2</sup>    **House size** 353 m<sup>2</sup>



### Available Structural Options

Rear Flip, Butlers Pantry, Deluxe Kitchen, Additional Master Suite, Balcony One, Balcony Two, Ensuited To Minor Bedrooms, 4 Bedrooms With WIR,

### Your Inclusions

- 'H' class waffle concrete slab
- Double glazing throughout
- Colorbond® corrugate roof with 22.5-degree roof pitch
- Dimmable LED downlights to main Living areas
- Flooring throughout (tiles and carpet)
- 'Quantum Quartz' engineered stone benchtops with 20mm edge profile
- 900mm Kitchen Appliances
- Laminate overhead cupboards with concealed rangehood to Kitchen
- Tiled shower bases to Bathroom and Ensuite
- Gas ducted heating
- 'Colorbond' sectional overhead door with automated lifter and remote controls
- Solar PV system
- 25-year structural guarantee
- 12-month maintenance period
- 7-Star energy rating compliance
- Trusted New Home Builder in Melbourne, Victoria for over 25 years

Package Enquiries  
Gemma Rosbiffi - 0409 801 884 ,  
gemma@beachwood-homes.com.au

