

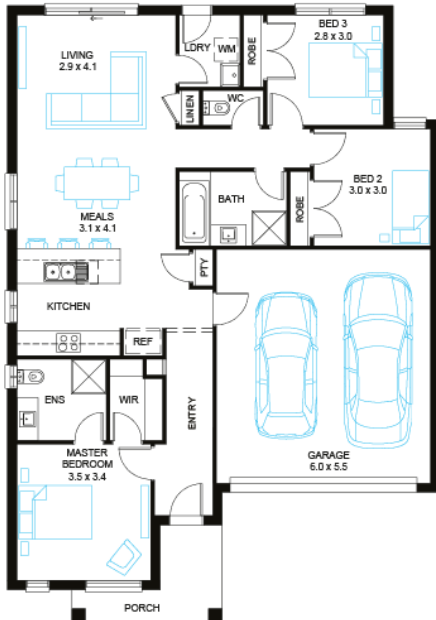


Correa 16

3 2 2

Address
Lot 4725, Meridian, Clyde North, 3978

Facade Raised MK1	Lot Width 12.5	Lot size 263 m ²	House size 153 m ²
--------------------------------	--------------------------	---------------------------------------	---



Available Structural Options

Deluxe Ensuite, Extended Living, U Shape Kitchen, Outdoor Living,

Your Inclusions

- Double glazing to all fully glazed aluminium external windows and sliding doors.
- `Fisher and Paykel` stainless steel appliances (600mm)
- Laminate overhead cupboards with concealed rangehood to Kitchen
- Towel rails and toilet roll holders to wet areas
- Tiled shower bases to Bathroom and Ensuite
- Flooring throughout (tiles and carpet)
- `Colorbond` sectional overhead door with automated lifter and remote controls
- Insect Screens with fibreglass mesh to all openable windows.
- Gas ducted heating with ceiling outlets to Bedrooms and all Living areas.
- `Dulux` Wash and Wear 3 Coat paint system to internal walls.
- 25 Year Structural Warranty

Package Enquiries
Abbey Cole - 0448 421 941,
abbey@beachwood-homes.com.au

MERIDIAN
CLYDE NORTH