



Lorne 28

4 2 2

Address
Lot 707, Officer Central, Officer, 3809

Facade
Bay

Lot Width
14

Lot size
392 m²

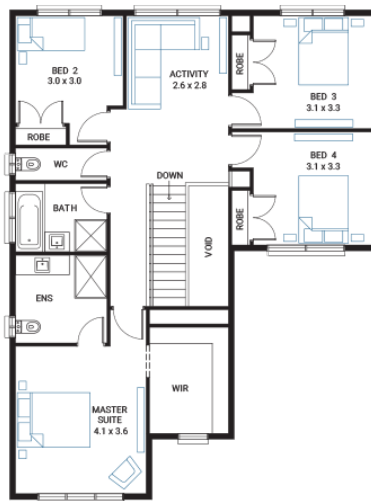
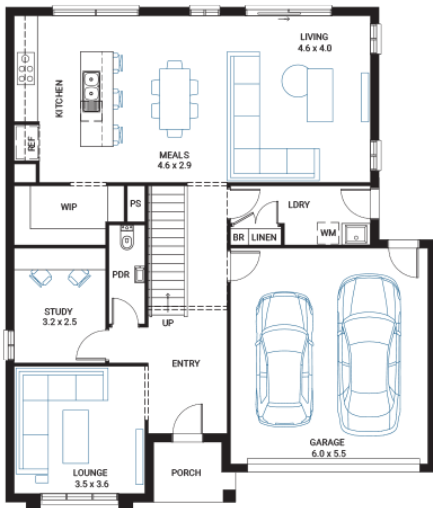
House size
259 m²

Available Structural Options

First Floor Grand Ensuite, Ground Floor Master Suite, First Floor Side Activity, Deluxe Kitchen, Butler's Pantry, Balcony, Rear Flip, WIR to Bed 2 and 3,

Your Inclusions

- 'H' class waffle concrete slab
- Double glazing throughout
- Colorbond® corrugate roof with 22.5-degree roof pitch
- Dimmable LED downlights to main Living areas
- Flooring throughout (tiles and carpet)
- 'Quantum Quartz' engineered stone benchtops with 20mm edge profile
- 900mm Kitchen Appliances
- Laminate overhead cupboards with concealed rangehood to Kitchen
- Tiled shower bases to Bathroom and Ensuite
- Gas ducted heating
- 'Colorbond' sectional overhead door with automated lifter and remote controls
- Solar PV system
- 25-year structural guarantee
- 12-month maintenance period
- 7-Star energy rating compliance
- Trusted New Home Builder in Melbourne, Victoria for over 25 years



Package Enquiries
Gemma Rosbiffi - 0409 801 884 ,
gemma@beachwood-homes.com.au

OfficerCentral