



## New Haven 22

4 2 2

### Address

Lot 123, Proposed Development, Pakenham, 3810

### Facade

Central

### Lot Width

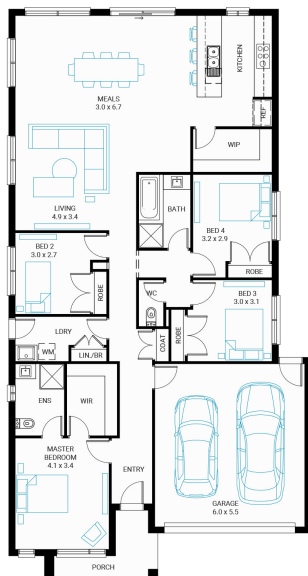
12.5

### Lot size

350 m<sup>2</sup>

### House size

207 m<sup>2</sup>



### Available Structural Options

Theatre, U Shape Kitchen, Study With Butlers Pantry, Butlers Pantry, Study, Rear Flip, Powder Room, Outdoor Living 2, Outdoor Living 1, Deluxe Ensuite, Grand Ensuite,

### Your Inclusions

- 'H' class waffle concrete slab
- Double glazing throughout
- Insect Screens with fibreglass mesh throughout
- Dimmable LED downlights to main Living areas
- Flooring throughout (tiles and carpet)
- 'Quantum Quartz' engineered stone benchtops with 20mm edge profile, to Kitchen
- 900mm Kitchen Appliances
- Laminate overhead cupboards with concealed rangehood to Kitchen
- Tiled shower bases to Bathroom and Ensuite
- Gas ducted heating
- 'Colorbond' sectional overhead door with automated lifter and remote controls
- Solar PV system
- 25-year structural guarantee
- 12-month maintenance period
- 7-Star energy rating compliance
- Trusted New Home Builder in Melbourne, Victoria for over 25 years

### Package Enquiries

Gemma Rosbiffi - 0409 801 884 ,  
gemma@beachwood-homes.com.au