



Protea 17

4 2 1

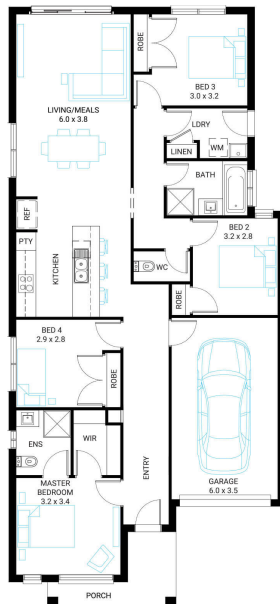
Address
Lot 118, Tommys Run, Pakenham, 3810

Facade
Raised

Lot Width
10.5

Lot size
289 m²

House size
160 m²



Available Structural Options

Outdoor Living, Rear Master, Theatre, Deluxe Ensuite,

Your Inclusions

- Double glazing to all fully glazed aluminium external windows and sliding doors.
- 'Fisher and Paykel' stainless steel appliances (600mm)
- Laminate overhead cupboards with concealed rangehood to Kitchen
- Towel rails and toilet roll holders to wet areas
- Tiled shower bases to Bathroom and Ensuite
- Flooring throughout (tiles and carpet)
- 'Colorbond' sectional overhead door with automated lifter and remote controls
- Insect Screens with fibreglass mesh to all openable windows.
- Gas ducted heating with ceiling outlets to Bedrooms and all Living areas.
- 'Dulux' Wash and Wear 3 Coat paint system to internal walls.
- 25 Year Structural Warranty

Package Enquiries
Gemma Rosbiffi - 0409 801 884 ,
gemma@beachwood-homes.com.au

**TOMMYS RUN
PAKENHAM CENTRAL**