

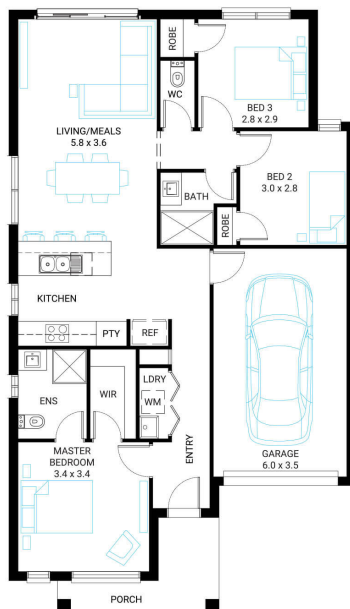


## Protea 14

3 2 1

**Address**  
Lot 117, Tommys Run, Pakenham, 3810

**Facade** Broad  
**Lot Width** 10.5  
**Lot size** 284 m<sup>2</sup>  
**House size** 128 m<sup>2</sup>



### Available Structural Options

Deluxe Ensuite, Deluxe Bathroom,

### Your Inclusions

- Double glazing to all fully glazed aluminium external windows and sliding doors.
- 'Fisher and Paykel' stainless steel appliances (600mm)
- Laminate overhead cupboards with concealed rangehood to Kitchen
- Towel rails and toilet roll holders to wet areas
- Tiled shower bases to Bathroom and Ensuite
- Flooring throughout (tiles and carpet)
- 'Colorbond' sectional overhead door with automated lifter and remote controls
- Insect Screens with fibreglass mesh to all openable windows.
- Gas ducted heating with ceiling outlets to Bedrooms and all Living areas.
- 'Dulux' Wash and Wear 3 Coat paint system to internal walls.
- 25 Year Structural Warranty

Package Enquiries  
Gemma Rosbiffi - 0409 801 884 ,  
gemma@beachwood-homes.com.au

**TOMMYS RUN**  
**PAKENHAM CENTRAL**