



Wave 19

3 2 2

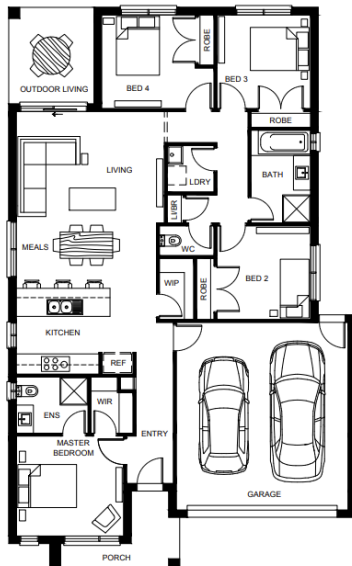
Address
Lot 251, Crownlea, Warragul, 3820

Facade
Pinnacle
MK1

Lot Width
12.5

Lot size
336 m²

House size
177 m²



Available Structural Options

Rear Flip, Fourth Bedroom, Fourth Bedroom & Outdoor Living, Deluxe Ensuite, Powder Room, U Shape Kitchen,

Your Inclusions

- 'H' class waffle concrete slab
- Double glazing throughout
- Insect Screens with fibreglass mesh throughout
- Dimmable LED downlights to main Living areas
- Flooring throughout (tiles and carpet)
- 'Quantum Quartz' engineered stone benchtops with 20mm edge profile
- 900mm Kitchen Appliances
- Laminate overhead cupboards with concealed rangehood to Kitchen
- Tiled shower bases to Bathroom and Ensuite
- Gas ducted heating
- 'Colorbond' sectional overhead door with automated lifter and remote controls
- Solar PV system
- 25-year structural guarantee
- 12-month maintenance period
- 7-Star energy rating compliance
- Trusted New Home Builder in Melbourne, Victoria for over 25 years

Package Enquiries
Gemma Rosbiffi - 0409 801 884 ,
gemma@beachwood-homes.com.au

