

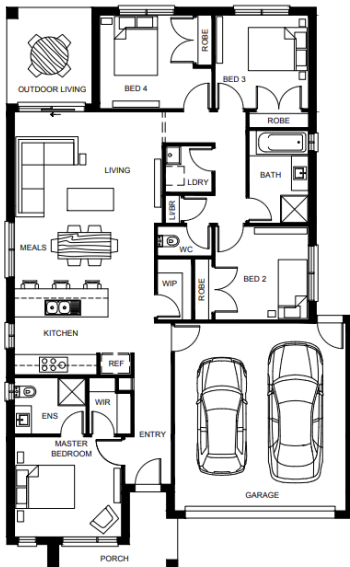


Wave 19

3 2 2

Address
Lot 251, Crownlea, Warragul, 3820

Facade Pinnacle MK1	Lot Width 12.5	Lot size 336 m ²	House size 177 m ²
----------------------------------	--------------------------	---------------------------------------	---



Available Structural Options

Rear Flip, Fourth Bedroom, Fourth Bedroom & Outdoor Living, Deluxe Ensuite, Powder Room, U Shape Kitchen,

Your Inclusions

- Double glazing to all fully glazed aluminium external windows and sliding doors.
- `Fisher and Paykel` stainless steel appliances (900mm)
- Engineered stone benchtops with 20mm edge profile to Kitchen.
- Laminate overhead cupboards with concealed rangehood to Kitchen
- Towel rails and toilet roll holders to wet areas
- Tiled shower bases to Bathroom and Ensuite
- Built in laundry laminate unit with inset trough
- Flooring throughout (tiles and carpet)
- Bristle Classic low profile roof tiles
- `Colorbond` sectional overhead door with automated lifter and remote controls
- Insect Screens with fibreglass mesh to all openable windows.
- Gas ducted heating with ceiling outlets to Bedrooms and all Living areas.
- `Dulux` Wash and Wear 3 Coat paint system to internal walls.
- 25 Year Structural Warranty

Package Enquiries
Gemma Rosbiffi - 0409 801 884 ,
gemma@beachwood-homes.com.au

