

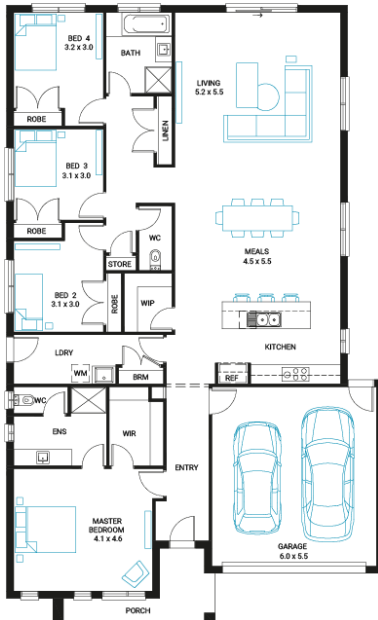


## Murray 25



**Address**  
Lot 7, Waterford Rise, Warragul, 3820

**Facade Cove**      **Lot Width** 14      **Lot size** 406 m<sup>2</sup>      **House size** 235 m<sup>2</sup>



### Available Structural Options

Outdoor Living, U Shape Kitchen, Butlers Pantry, Fifth Bedroom, Theatre Room, Study, Rear Flip, Deluxe Kitchen, Walk In Linen, Powder Room,

### Your Inclusions

- Double glazing to all fully glazed aluminium external windows and sliding doors.
- 'Fisher and Paykel' stainless steel appliances (900mm)
- Engineered stone benchtops with 20mm edge profile to Kitchen.
- Laminate overhead cupboards with concealed rangehood to Kitchen
- Towel rails and toilet roll holders to wet areas
- Tiled shower bases to Bathroom and Ensuite
- Built in laundry laminate unit with inset trough
- Flooring throughout (tiles and carpet)
- Bristle Classic low profile roof tiles
- 'Colorbond' sectional overhead door with automated lifter and remote controls
- Insect Screens with fibreglass mesh to all openable windows.
- Gas ducted heating with ceiling outlets to Bedrooms and all Living areas.
- 'Dulux' Wash and Wear 3 Coat paint system to internal walls.
- 25 Year Structural Warranty

Package Enquiries  
Gemma Rosbiffi - 0409 801 884 ,  
gemma@beachwood-homes.com.au

