

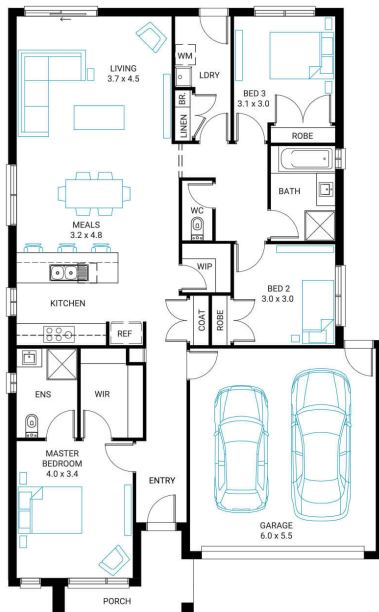


## Wave 19

3 2 2

**Address**  
Lot 6, Waterford Rise, Warragul, 3820

**Facade Mode** **Lot Width** 12.5 **Lot size** 407 m<sup>2</sup> **House size** 177 m<sup>2</sup>



### Available Structural Options

Rear Flip, Fourth Bedroom, Fourth Bedroom & Outdoor Living, Deluxe Ensuite, Powder Room, U Shape Kitchen,

### Your Inclusions

- 'H' class waffle concrete slab
- Double glazing throughout
- Insect Screens with fibreglass mesh throughout
- Dimmable LED downlights to main Living areas
- Flooring throughout (tiles and carpet)
- 'Quantum Quartz' engineered stone benchtops with 20mm edge profile
- 900mm Kitchen Appliances
- Laminate overhead cupboards with concealed rangehood to Kitchen
- Tiled shower bases to Bathroom and Ensuite
- Gas ducted heating
- 'Colorbond' sectional overhead door with automated lifter and remote controls
- Solar PV system
- 25-year structural guarantee
- 12-month maintenance period
- 7-Star energy rating compliance
- Trusted New Home Builder in Melbourne, Victoria for over 25 years

Package Enquiries  
Gemma Rosbiffi - 0409 801 884 ,  
gemma@beachwood-homes.com.au

