

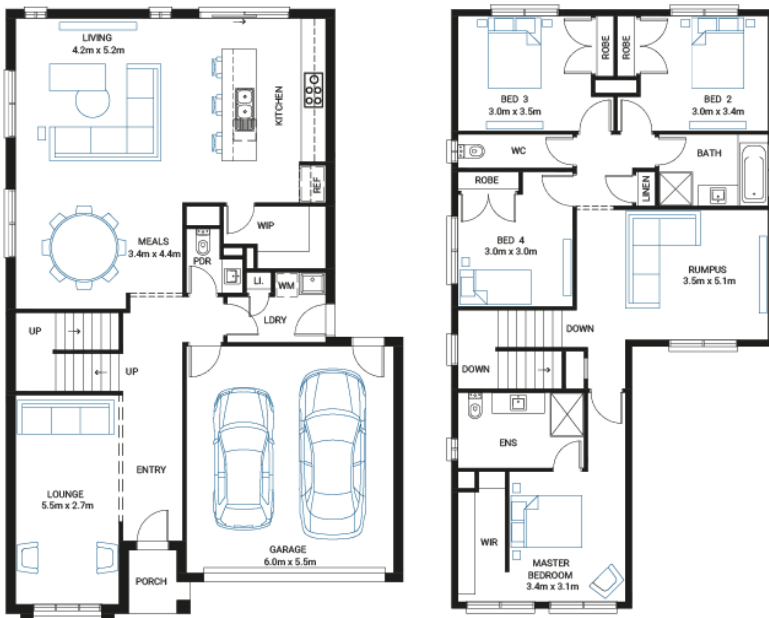


Spinifex 28 ●



Address
Lot 148, Kala, Pakenham East, 3810

Facade	Lot Width	Lot size	House size
Bay	12.5	350 m ²	258 m ²



Available Structural Options

Extended Lounge, Extended Laundry & Pantry, Fifth Bedroom, Fireplace, Butlers Pantry, Balcony, Shower to Powder Room, Deluxe Kitchen, Additional Master Suite, First Floor Powder Room,

Your Inclusions

- 'H' class waffle concrete slab
- Double glazing throughout
- Colorbond® corrugate roof with 22.5-degree roof pitch
- Dimmable LED downlights to main Living areas
- Flooring throughout (tiles and carpet)
- 'Quantum Quartz' engineered stone benchtops with 20mm edge profile, to Kitchen
- 900mm Kitchen Appliances
- Laminate overhead cupboards with concealed rangehood to Kitchen
- Tiled shower bases to Bathroom and Ensuite
- Gas ducted heating
- 'Colorbond' sectional overhead door with automated lifter and remote controls
- Solar PV system
- 25-year structural guarantee
- 12-month maintenance period
- 7-Star energy rating compliance
- Trusted New Home Builder in Melbourne, Victoria for over 25 years

Package Enquiries
Abbey Cole - 0448 421 941,
abbey@beachwood-homes.com.au

