

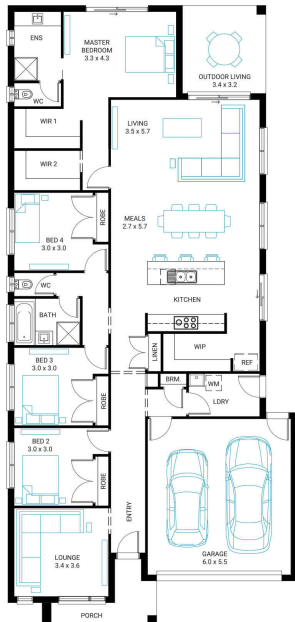


Albany 25

4 2 2

Address
Lot 2321, St Germain, Clyde North, 3978

| | | | |
|--------------------------------|--------------------------|---------------------------------------|---|
| Facade Chalet MK1 | Lot Width 12.5 | Lot size 476 m ² | House size 236 m ² |
|--------------------------------|--------------------------|---------------------------------------|---|



Available Structural Options

Fifth Bedroom, Theatre Room, Additional Master Suite, Butler's Pantry, U Shape Kitchen, Study, Rear Flip,

Your Inclusions

- 'H' class waffle concrete slab
- Double glazing throughout
- Insect Screens with fibreglass mesh throughout
- Dimmable LED downlights to main Living areas
- Flooring throughout (tiles and carpet)
- 'Quantum Quartz' engineered stone benchtops with 20mm edge profile, to Kitchen
- 900mm Kitchen Appliances
- Laminate overhead cupboards with concealed rangehood to Kitchen
- Tiled shower bases to Bathroom and Ensuite
- Gas ducted heating
- 'Colorbond' sectional overhead door with automated lifter and remote controls
- Solar PV system
- 25-year structural guarantee
- 12-month maintenance period
- 7-Star energy rating compliance
- Trusted New Home Builder in Melbourne, Victoria for over 25 years

Package Enquiries
Abbey Cole - 0448 421 941,
abbey@beachwood-homes.com.au

