

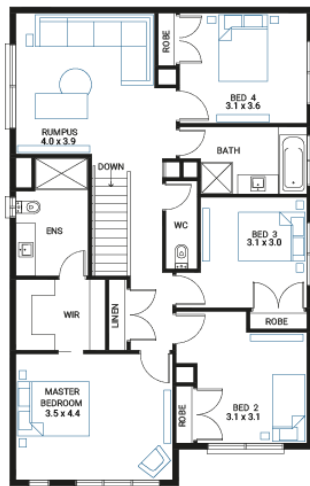


## Gunnamatta 29 ●



**Address**  
Lot 4942, Meridian, Clyde North, 3978

Facade	Lot Width	Lot size	House size
Bay	12.5	313 m <sup>2</sup>	269 m <sup>2</sup>



### Available Structural Options

First Floor Powder Room, Deluxe Kitchen, Extended Laundry & Kitchen, Grand Outdoor, Rear Flip, Bedroom 5, Shower to Powder, Balcony 1, Balcony 2,

### Your Inclusions

- 'H' class waffle concrete slab
- Double glazing throughout
- Colorbond' corrugate roof with 22.5-degree roof pitch
- Dimmable LED downlights to main Living areas
- Flooring throughout (tiles and carpet)
- 'Quantum Quartz' engineered stone benchtops with 20mm edge profile, to Kitchen
- 900mm Kitchen Appliances
- Laminate overhead cupboards with concealed rangehood to Kitchen
- Tiled shower bases to Bathroom and Ensuite
- Gas ducted heating
- 'Colorbond' sectional overhead door with automated lifter and remote controls
- Solar PV system
- 25-year structural guarantee
- 12-month maintenance period
- 7-Star energy rating compliance
- Trusted New Home Builder in Melbourne, Victoria for over 25 years

Package Enquiries  
Abbey Cole - 0448 421 941,  
abbey@beachwood-homes.com.au

**MERIDIAN**  
CLYDE NORTH