



## Glenelg 22

4 2 2

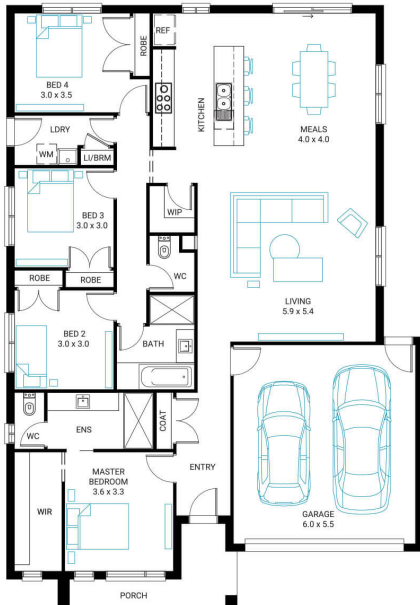
**Address**  
Lot 2609, Riverfield, Clyde, 3978

**Facade**  
Chalet  
MK2

**Lot Width**  
15.2

**Lot size**  
426 m<sup>2</sup>

**House size**  
206 m<sup>2</sup>



### Available Structural Options

Powder Room, U Shape Kitchen, Rear Flip,

### Your Inclusions

- 'H' class waffle concrete slab
- Double glazing throughout
- Insect Screens with fibreglass mesh throughout
- Dimmable LED downlights to main Living areas
- Flooring throughout (tiles and carpet)
- 'Quantum Quartz' engineered stone benchtops with 20mm edge profile, to Kitchen
- 900mm Kitchen Appliances
- Laminate overhead cupboards with concealed rangehood to Kitchen
- Tiled shower bases to Bathroom and Ensuite
- Gas ducted heating
- 'Colorbond' sectional overhead door with automated lifter and remote controls
- Solar PV system
- 25-year structural guarantee
- 12-month maintenance period
- 7-Star energy rating compliance
- Trusted New Home Builder in Melbourne, Victoria for over 25 years

Package Enquiries  
Abbey Cole - 0448 421 941,  
abbey@beachwood-homes.com.au

