

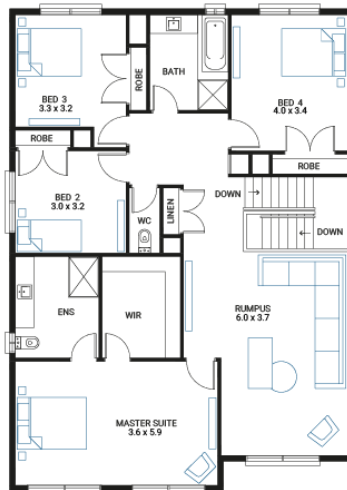
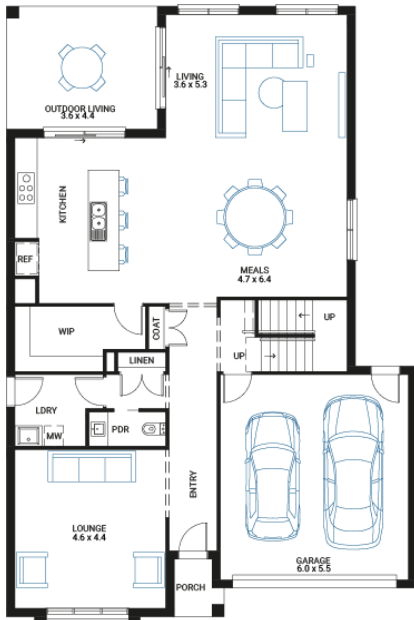


Jarrah 35



Address
Lot 260, Crownlea, Warragul, 3820

Facade Bay Mk2
Lot Width 18
Lot size 524 m²
House size 329 m²



Available Structural Options

Grand Ensuite, Deluxe Kitchen, Powder Room, Extended Laundry and Pantry, Butlers Pantry, Deluxe Bathroom, Additional WIR, Rear Flip, Balcony 1, Balcony 2,

Your Inclusions

- 'H' class waffle concrete slab
- Double glazing throughout
- Colorbond® corrugate roof with 22.5-degree roof pitch
- Dimmable LED downlights to main Living areas
- Flooring throughout (tiles and carpet)
- 'Quantum Quartz' engineered stone benchtops with 20mm edge profile, to Kitchen
- 900mm Kitchen Appliances
- Laminate overhead cupboards with concealed rangehood to Kitchen
- Tiled shower bases to Bathroom and Ensuite
- Gas ducted heating
- 'Colorbond' sectional overhead door with automated lifter and remote controls
- Solar PV system
- 25-year structural guarantee
- 12-month maintenance period
- 7-Star energy rating compliance
- Trusted New Home Builder in Melbourne, Victoria for over 25 years

Package Enquiries
Leanne Marshall - 0485 935 578,
leanne@beachwood-homes.com.au

