

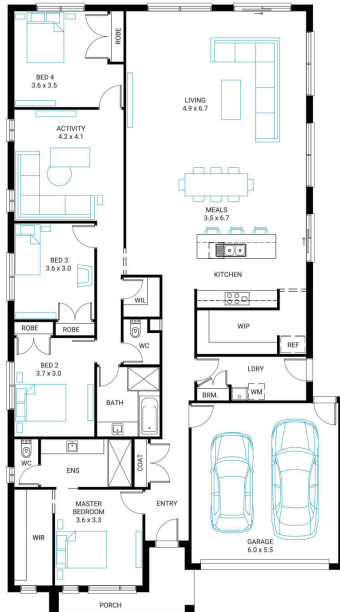


Glenelg 27



Address
Lot 4663, Meridian, Clyde North, 3978

Facade Mode	Lot Width	Lot size	House size
MK1	14	444 m ²	259 m ²



Available Structural Options

Outdoor Living, Powder Room, Fifth Bedroom, U Shape Kitchen, Office, Rear Flip,

Your Inclusions

- 'H' class waffle concrete slab
- Double glazing throughout
- Insect Screens with fibreglass mesh throughout
- Dimmable LED downlights to main Living areas
- Flooring throughout (tiles and carpet)
- 'Quantum Quartz' engineered stone benchtops with 20mm edge profile
- 900mm Kitchen Appliances
- Laminate overhead cupboards with concealed rangehood to Kitchen
- Tiled shower bases to Bathroom and Ensuite
- Gas ducted heating
- 'Colorbond' sectional overhead door with automated lifter and remote controls
- Solar PV system
- 25-year structural guarantee
- 12-month maintenance period
- 7-Star energy rating compliance
- Trusted New Home Builder in Melbourne, Victoria for over 25 years

Package Enquiries
Olivia Turner - 0429 812 436,
olivia@beachwood-homes.com.au

MERIDIAN
LIVING