

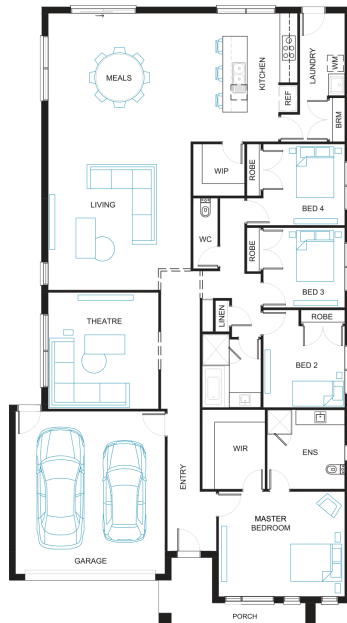


## Norfolk 27



**Address**  
Lot 579, Parklands, Wonthaggi, 3995

**Facade** Pacific  
**Lot Width** 14  
**Lot size** 1012 m<sup>2</sup>  
**House size** 260 m<sup>2</sup>



### Available Structural Options

Outdoor Living, Grand Outdoor Living, Powder Room, Rear Flip, Grand Ensuite, Butler's Pantry, Deluxe Kitchen, Study,

### Your Inclusions

- 'H' class waffle concrete slab
- Double glazing throughout
- Insect Screens with fibreglass mesh throughout
- Dimmable LED downlights to main Living areas
- Flooring throughout (tiles and carpet)
- 'Quantum Quartz' engineered stone benchtops with 20mm edge profile
- 900mm Kitchen Appliances
- Laminate overhead cupboards with concealed rangehood to Kitchen
- Tiled shower bases to Bathroom and Ensuite
- Gas ducted heating
- 'Colorbond' sectional overhead door with automated lifter and remote controls
- Solar PV system
- 25-year structural guarantee
- 12-month maintenance period
- 7-Star energy rating compliance
- Trusted New Home Builder in Melbourne, Victoria for over 25 years

Package Enquiries  
Olivia Turner - 0429 812 436,  
olivia@beachwood-homes.com.au

