

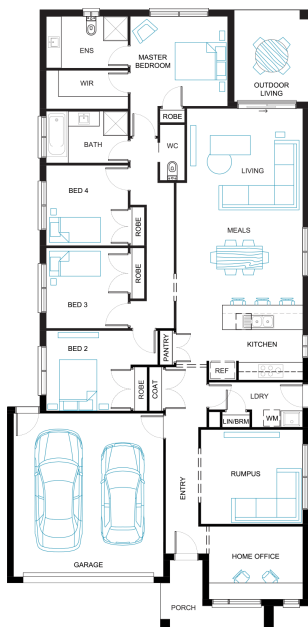


## Malibu 24

4  2  2 

**Address**  
Lot 4633, Meridian, Clyde North, 3978

**Facade** Matrix    **Lot Width** 12.5    **Lot size** 375 m<sup>2</sup>    **House size** 225 m<sup>2</sup>



### Your Inclusions

- Double glazing to all fully glazed aluminium external windows and sliding doors.
- `Fisher and Paykel` stainless steel appliances (900mm)
- Engineered stone benchtops with 20mm edge profile to Kitchen.
- Laminate overhead cupboards with concealed rangehood to Kitchen
- Towel rails and toilet roll holders to wet areas
- Tiled shower bases to Bathroom and Ensuite
- Built in laundry laminate unit with inset trough
- Flooring throughout (tiles and carpet)
- Bristle Classic low profile roof tiles
- `Colorbond` sectional overhead door with automated lifter and remote controls
- Insect Screens with fibreglass mesh to all openable windows.
- Gas ducted heating with ceiling outlets to Bedrooms and all Living areas.
- `Dulux` Wash and Wear 3 Coat paint system to internal walls.
- 25 Year Structural Warranty

Package Enquiries  
Olivia Turner - 0429 812 436,  
olivia@beachwood-homes.com.au

**MERIDIAN**  
CLYDE NORTH